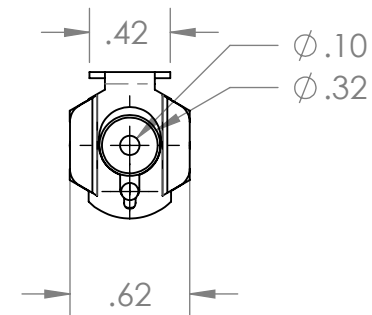
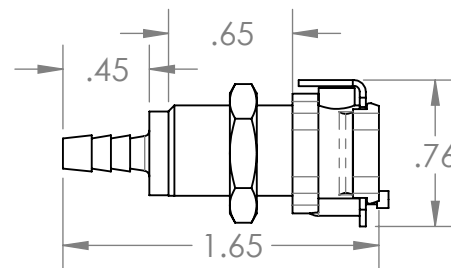
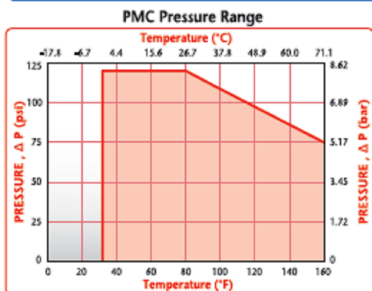
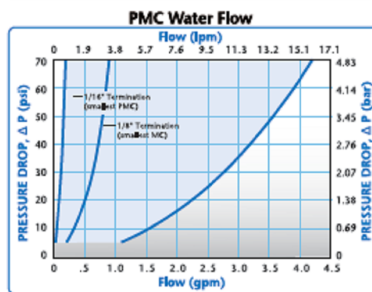
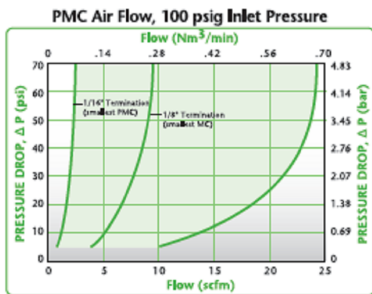
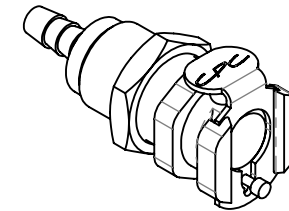
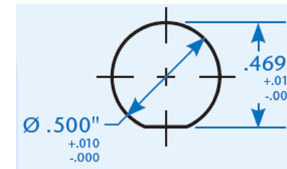



Panel Mount  
Opening Dimensions



**Industrial Specialties Mfg.**  
**IS Med Specialties**

UNLESS OTHERWISE SPECIFIED:		NAME	DATE	 <b>Industrial Specialties Mfg.</b> <b>IS Med Specialties</b>
DIMENSIONS ARE IN INCHES TOLERANCES: FRACTIONAL ± ANGULAR: MACH ± BEND ± TWO PLACE DECIMAL ± THREE PLACE DECIMAL ±	DRAWN	ME	3/31/2013	
	CHECKED			
	ENG APPR.			
	MFG APPR.			
MATERIAL		COMMENTS:		DESCRIPTION: 1/8" Hose Barb Valved Body, 1/8" Flow, 1/2-24 UNS Panel Thread
FINISH	Acetal	SIZE	PART#	REV
DO NOT SCALE DRAWING		A	PMCD1602	1
SCALE: 1:1			SHEET 1 OF 1	

PROPRIETARY AND CONFIDENTIAL

THE INFORMATION CONTAINED IN THIS DRAWING IS THE SOLE PROPERTY OF INDUSTRIAL SPECIALTIES MFG. AND IS MED SPECIALITES. ANY REPRODUCTION IN PART OR AS A WHOLE WITHOUT THE WRITTEN PERMISSION OF INDUSTRIAL SPECIALTIES MFG. AND IS MED SPECIALITES IS PROHIBITED.