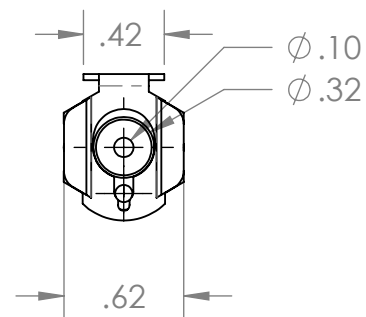
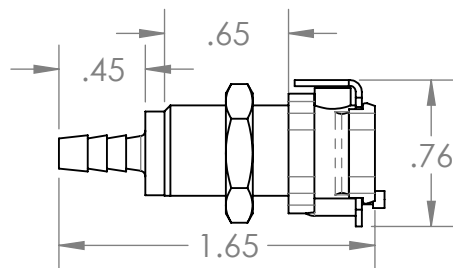
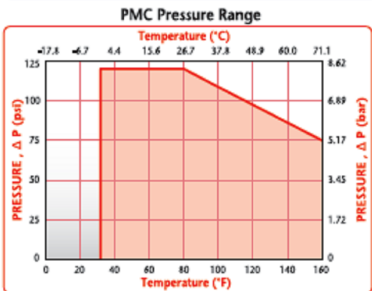
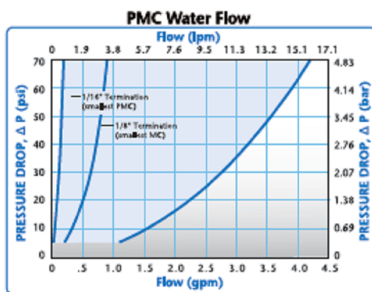
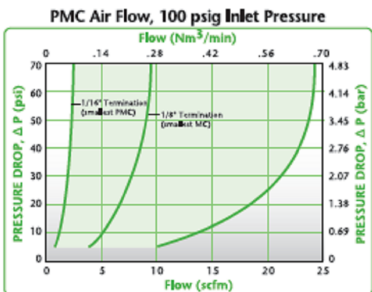
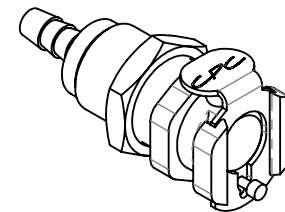
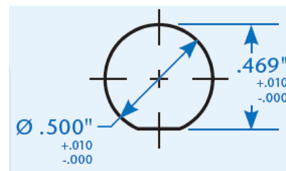


Panel Mount
Opening Dimensions



UNLESS OTHERWISE SPECIFIED:

DIMENSIONS ARE IN INCHES
TOLERANCES:
FRACTIONAL ±
ANGULAR: MACH ± BEND ±
TWO PLACE DECIMAL ±
THREE PLACE DECIMAL ±

MATERIAL
Acetal

FINISH

DO NOT SCALE DRAWING

NAME
ME

DATE
3/31/2013

DRAWN

CHECKED

ENG APPR.

MFG APPR.

Q.A.

COMMENTS:



Industrial Specialties Mfg.
IS Med Specialties

DESCRIPTION:

1/8" Hose Barb Non-Valved Body,
1/8" Flow, 1/2-24 UNS Panel Thread

SIZE
A

PART#
PMC1602

REV
1

SCALE: 1:1

SHEET 1 OF 1

PROPRIETARY AND CONFIDENTIAL

THE INFORMATION CONTAINED IN THIS DRAWING IS THE SOLE PROPERTY OF INDUSTRIAL SPECIALTIES MFG. AND IS MED SPECIALITES. ANY REPRODUCTION IN PART OR AS A WHOLE WITHOUT THE WRITTEN PERMISSION OF INDUSTRIAL SPECIALTIES MFG. AND IS MED SPECIALITES IS PROHIBITED.