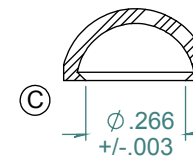
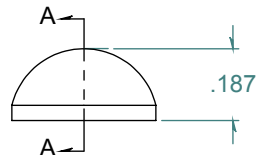
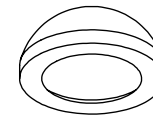
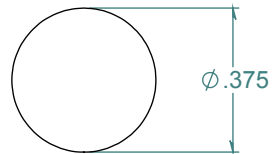


REVISION HISTORY			
REV.	DESCRIPTION	DATE	APPROVED
A	PART RELEASE DATE	12/04/1984	KAH
B	REDRAWN w/o CHANGE	06/26/2006	KAH
C	ECOR #A0151	10/16/2007	KAH



SECTION A-A  
SCALE 2 : 1

DIMENSIONS ARE IN INCHES UNLESS SPECIFIED. TOLERANCES ARE:  
 FRACTIONS  $\pm .015$   
 2 PLACE DECIMAL  $\pm .010$   
 3 PLACE DECIMAL  $\pm .005$   
 ANGLES NOTED

**ARK-PLAS PRODUCTS, INC.**

DFX61-LE2  
 #8 DOME CAP  
 DESIGNED TO COVER #8 PAN SCREW

FREE SAMPLES ARE AVAILABLE FOR TESTING. CONTACT CUSTOMER SERVICE

PROPRIETARY AND CONFIDENTIAL  
 THE INFORMATION CONTAINED IN THIS DRAWING IS THE SOLE PROPERTY OF  
 ARK-PLAS PRODUCTS, INC. ANY REPRODUCTION IN PART OR AS A WHOLE  
 WITHOUT THE WRITTEN PERMISSION OF ARK-PLAS PRODUCTS, INC. IS PROHIBITED.

MATERIAL:  
 L.D. POLYETHYLENE, WHITE  
 FINISH: RMS 109.2

JOB #	AP013	PRINT ISSUE DATE:	06/26/06
SIZE	SCALE: 2:1	SHEET:	1 OF 1
<b>A</b>	DO NOT SCALE DRAWING	DRAWN BY:	KAH
		REV. LEVEL	<b>C</b>