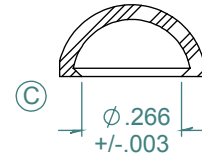
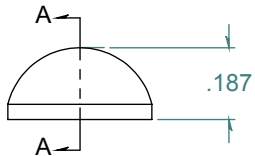
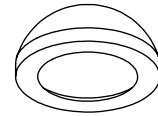
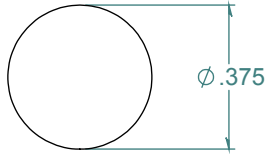


REVISION HISTORY			
REV.	DESCRIPTION	DATE	APPROVED
A	PART RELEASE DATE	12/04/1984	KAH
B	REDRAWN w/o CHANGE	06/26/2006	KAH
C	ECOR #A0151	10/16/2007	KAH



SECTION A-A
SCALE 2 : 1

DIMENSIONS ARE IN INCHES UNLESS SPECIFIED. TOLERANCES ARE:
 FRACTIONS $\pm .015$
 2 PLACE DECIMAL $\pm .010$
 3 PLACE DECIMAL $\pm .005$
 ANGLES NOTED

ARK-PLAS PRODUCTS, INC.

DFX61-LE1
 #8 DOME CAP
 DESIGNED TO COVER #8 PAN SCREW

FREE SAMPLES ARE AVAILABLE FOR TESTING. CONTACT CUSTOMER SERVICE

MATERIAL:
 L.D. POLYETHYLENE, BLACK
 FINISH: RMS 109.2

JOB #	AP013	PRINT ISSUE DATE:	06/26/06
SIZE	A	SCALE:	2:1
		SHEET:	1 OF 1
		DRAWN BY:	KAH
		DO NOT SCALE DRAWING	
		REV. LEVEL	C

PROPRIETARY AND CONFIDENTIAL
 THE INFORMATION CONTAINED IN THIS DRAWING IS THE SOLE PROPERTY OF ARK-PLAS PRODUCTS, INC. ANY REPRODUCTION IN PART OR AS A WHOLE WITHOUT THE WRITTEN PERMISSION OF ARK-PLAS PRODUCTS, INC. IS PROHIBITED.