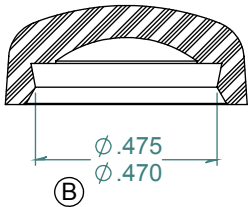
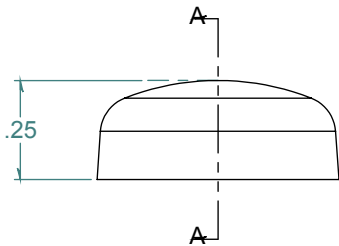
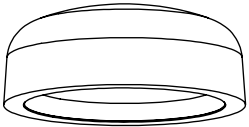
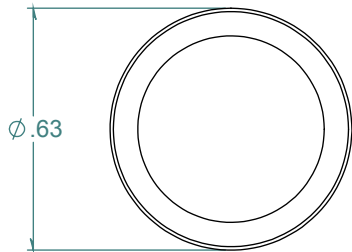


REVISION HISTORY			
REV.	DESCRIPTION	DATE	APPROVED
A	PRINT RELEASE DATE	09/19/2016	KAH
B	ECO #A1158	09/05/2018	KAH



SECTION A-A

DIMENSIONS ARE IN INCHES UNLESS SPECIFIED. TOLERANCES ARE: FRACTIONS $\pm .015$ 2 PLACE DECIMAL $\pm .010$ 3 PLACE DECIMAL $\pm .005$ ANGLES NOTED		<b>ARK-PLAS PRODUCTS, INC.</b>	
		DAC83-PR2 #8 - #10 POP-ON SCREW COVER	
MATERIAL: POLYPROPYLENE, WHITE		SIZE <b>A</b>	REV. LEVEL <b>B</b>
FINISH: MATTE		JOB # AP298 SCALE: 2:1 <small>DO NOT SCALE DRAWING</small>	DRAWN BY: <i>KAH</i> SHEET 1 OF 1

FREE SAMPLES ARE AVAILABLE FOR TESTING. CONTACT CUSTOMER SERVICE

**PROPRIETARY AND CONFIDENTIAL**  
 THE INFORMATION CONTAINED IN THIS DRAWING IS THE SOLE PROPERTY OF ARK-PLAS PRODUCTS, INC. ANY REPRODUCTION IN PART OR AS A WHOLE WITHOUT THE WRITTEN PERMISSION OF ARK-PLAS PRODUCTS, INC. IS PROHIBITED.