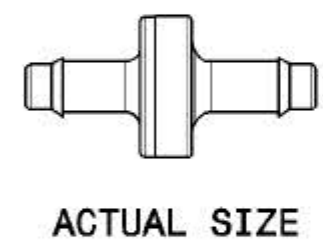
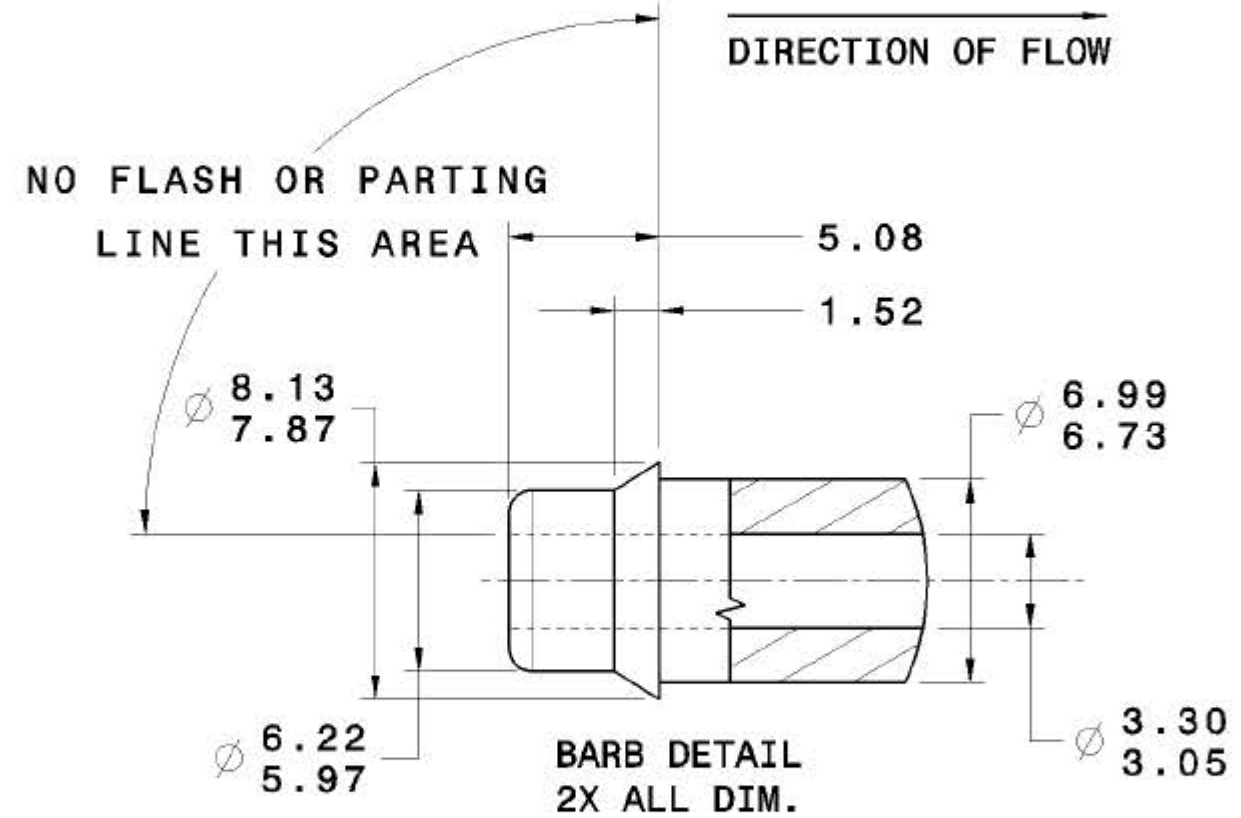


- Functional reliability from -20° to 210° F
- Sonic Welding which will not come apart under recommended conditions
- Recommended for systems between 3 and 15 psi vacuum or pressure
- Fast response between nearly a free flow condition and no flow condition, may be cycled as fast as once per second

Approximate Weight: 0.0064 lbs.



D1	1.55 WAS 1.3	080417	GHK WILKA	JOEST	KATOI
C1	REMOVED WATER TESTING NOTE	080220	MIKHA KVH	JOEST	KATOI
B1	REVISED NOTE PER ECR #9735	4/07/2006	MIKHA KVH	EMM	
	REDRAWN IN CATIA V5				
A	REVISED MAT'L. SPEC. PER ECN #4539	920114	GHK JMR		
REV	DESCRIPTION	DATE	DRAWN CHECKED	ENR. APPROVAL	AQP

WAS: _____ LAYOUT NUMBER: _____

DO NOT SCALE NUMBER OF DECIMAL PLACES DOES NOT IMPLY A TOLERANCE

THIS DRAWING CONFORMS TO ASME Y14.5-1994	DRAWN BY GHK	CHECKED BY JMR	DESIGNED BY	SCALE 2:1
	DATE 920102	DATE 920102	DATE	DRAWING SIZE B
UNLESS OTHERWISE SPECIFIED ALL LINEAR DIM. ± 1 ALL ANGULAR DIM. ± ALL FILLET RADII ALL CORNER RADII MAX DRAFT MAX COMBINED PARTING LINE FLASH AND MISMATCH TO BE SURFACE FINISH EXTERIOR INTERIOR	PRD ENGINEER	MPG ENGINEER	QC	TOOL ENGINEER
	DATE	DATE	DATE	DATE
CUSTOMER NUMBER		DATE	REV	
MATERIAL BASE AND COVER: ZYTEL DIAPHRAGM: BLACK EPDM P/N CS4124				
DRAWING TITLE 1/4 IN. CHECK VALVE ASSEMBLY		MODEL REV. A	DRAWING REV. D	SHEET 1/1
DRAWING NUMBER A594				

- NOTE:**
- C1** DRY LEAK TEST (SPRINT TESTER). LEAK TEST LESS THAN 3CC @ 5PSI. 100% FLOW TEST REQUIRED. MINIMUM OF 1.55 CFM @ 10"HG.
 - B1** FORWARD FLOW WITH 10 IN. HG VACUUM APPLIED TO OUTLET TO BE 1.55 CFM MINIMUM.
 - D1** LAZER DATE CODE REQUIRED.

THE DATA, DRAWINGS, AND INFORMATION CONTAINED ON THIS DOCUMENT IS CONFIDENTIAL AND THE SOLE PROPERTY OF MPC INC. AND MAY NOT BE REPRODUCED, USED OR DISCLOSED WITHOUT PRIOR WRITTEN PERMISSION OF AN OFFICER OF MPC INC.

WEIGHT (kg)	METRIC LINEAR DIMENSIONS ARE MM UNLESS NOTED
VOLUME (MM ³)	