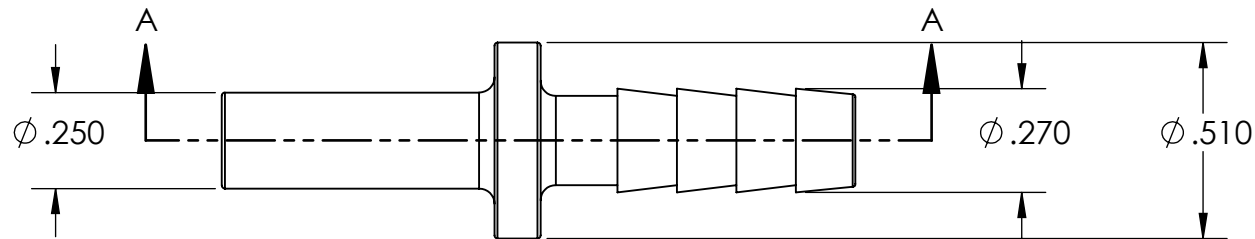
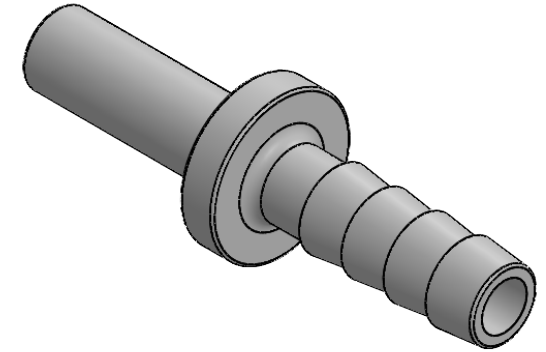



SECTION A-A



NOTES

1. Working Temperature for Potable Liquids and Air: +150°F
2. Working Pressure for Potable Liquids and Air: 100 psi (3/8" - 1/2")
3. Using high temperature chemical 80-90°C (176-194°F)

FOR REFERENCE ONLY

PROPRIETARY AND CONFIDENTIAL	Description		NAME	DATE	PART#	REV
THE INFORMATION CONTAINED IN THIS DRAWING IS FOR REFERENCE ONLY AND REMAINS THE SOLE PROPERTY OF INDUSTRIAL SPECIALTIES MFG. AND IS MED SPECIALITES. ANY REPRODUCTION IN PART OR AS A WHOLE WITHOUT THE WRITTEN PERMISSION OF INDUSTRIAL SPECIALTIES MFG. AND IS MED SPECIALITES IS PROHIBITED.	1/4" Hose Barb x 1/4" OD Stem Adapter, Gray Acetal	DRAWN BY:	M.K.	11.11.2022	QTH-14-14	1
		SHEET 1 OF 1			<div> Industrial Specialties Mfg. & IS MED Specialties (ISM)</div> <div>industrialspec.com 800-781-8486</div>	
		SCALE: 2:1				
		DO NOT SCALE DRAWING				