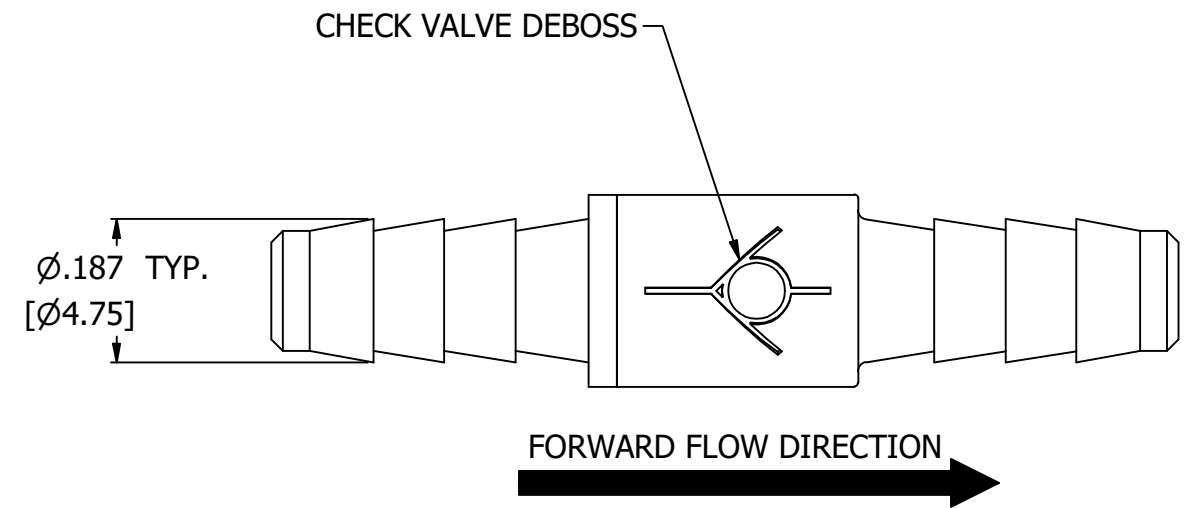
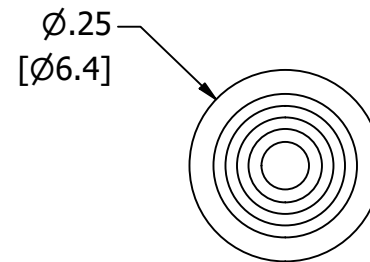
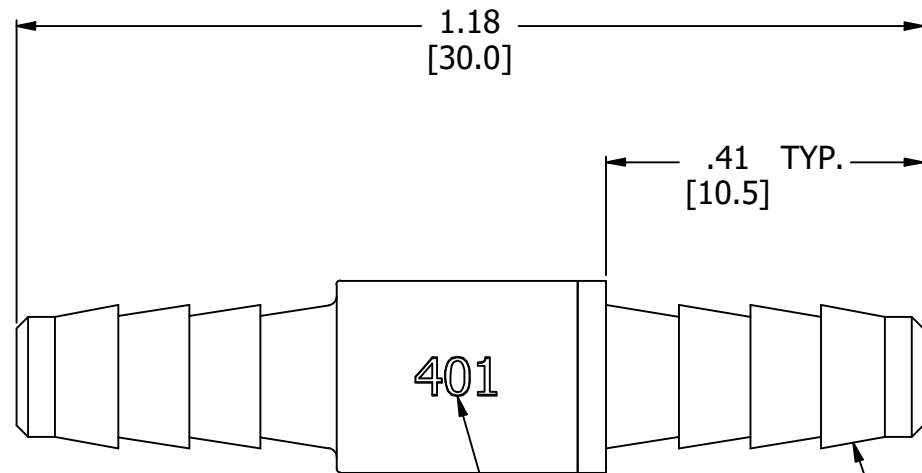
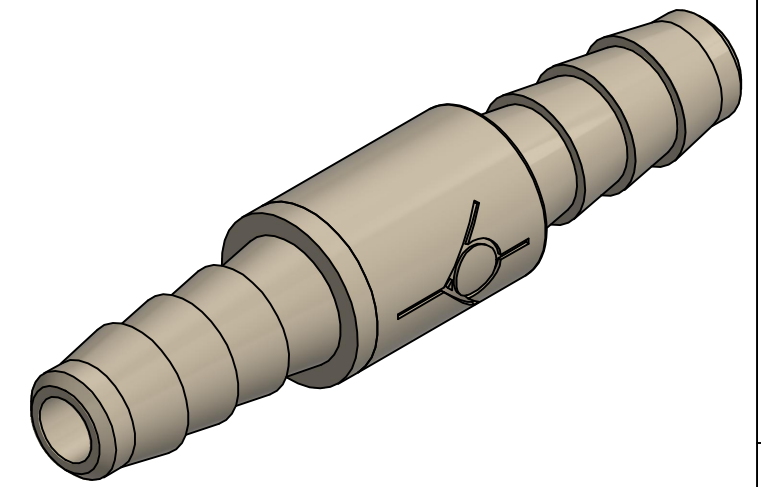


NOTES:

1. ALL DIMENSIONS FOR REFERENCE ONLY
2. REFER TO AIR LOGIC'S POLYSULFONE APPLICATION GUIDE
3. TUBE RETENTION PRESSURE SUBJECT TO TUBING DIMENSION AND STIFFNESS
4. GASES MUST BE CLEAN AND DRY



PART NO. DEBOSS

BARBED CONNECTIONS FOR 1/8" [3.2] I.D. TUBE, FIRST BARB FREE OF PARTING LINE

PRODUCT SPECIFICATIONS

|                                   |                            |
|-----------------------------------|----------------------------|
| COLOR(S)                          | WHITE HOUSING              |
| CHECK VALVE TYPE                  | FLOATING DISK              |
| CRACKING PRESSURE                 | LESS THAN .8 inH2O         |
| FORWARD FLOW AT 1PSI DIFFERENTIAL | 0.12 SCFM                  |
| REVERSE FLOW AT 1PSI DIFFERENTIAL | LESS THAN 2.98 SCIM        |
| MEDIA                             | GASES, NOTE 2, NOTE 4      |
| MAX INLET PRESSURE                | 10 PSI, [689 MILLIBAR]     |
| TYPICAL TUBE RETENTION PRESSURE   | 125 PSI, [8.6 BAR], NOTE 3 |
| WETTED MATERIALS                  | POLYSULFONE, ACETAL        |
| RECOMMENDED SYSTEM FILTRATION     | 5 MICRON                   |



**AIR-LOGIC** @ DIVISION OF KNAPP MFG, INC.  
 5102 DOUGLAS AVE RACINE, WI 53402  
 PHONE: (262) 639-9035 FAX: (262) 639-5996 WEB: AIR-LOGIC.COM

PART/DRAWING NO.:

**F2804401B85**

DESCRIPTION:  
 INLINE CHECK VALVE, 1/8" BARBS

REVISION: A

DRAWN: 3/10/2021

SCALE: 4 : 1

SHEET SIZE: B

TERMS OF USE:

THIS DRAWING IS FOR INFORMATIONAL PURPOSES ONLY. AIR LOGIC MAKES NO REPRESENTATIONS OF WARRANTIES CONCERNING SUITABILITY FOR ANY PARTICULAR PURPOSE. ALL PRODUCTS SUPPLIED ARE SUBJECT TO TERMS AND CONDITIONS FOUND AT AIR-LOGIC.COM

DRAWING TAKES PRECEDENCE OVER 3D MODEL GEOMETRY

TOLERANCE: DECIMALS .00 ± .01, .000 ± .005, FRACTIONS ± 1/64  
 ANGLES 1/4° UNLESS OTHERWISE SPECIFIED  
 UNITS: INCHES [MILLIMETERS]