

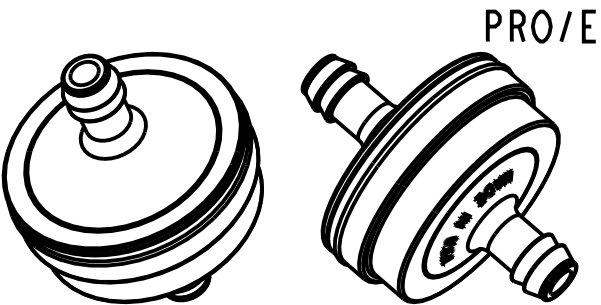


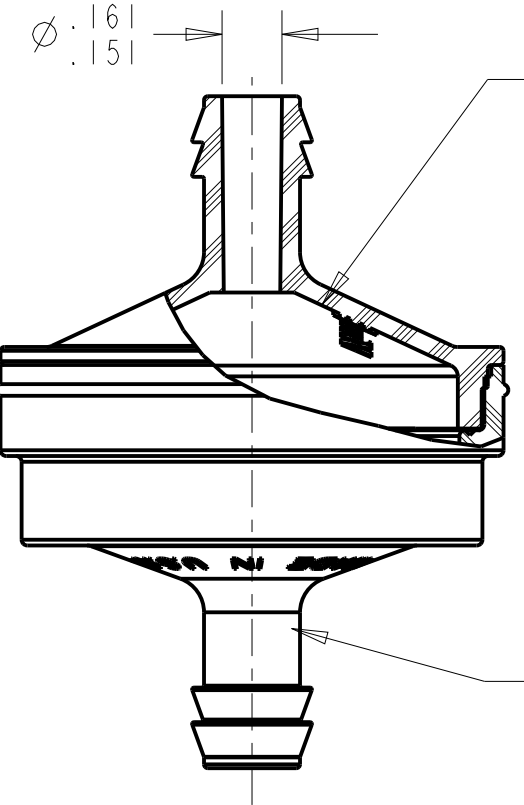
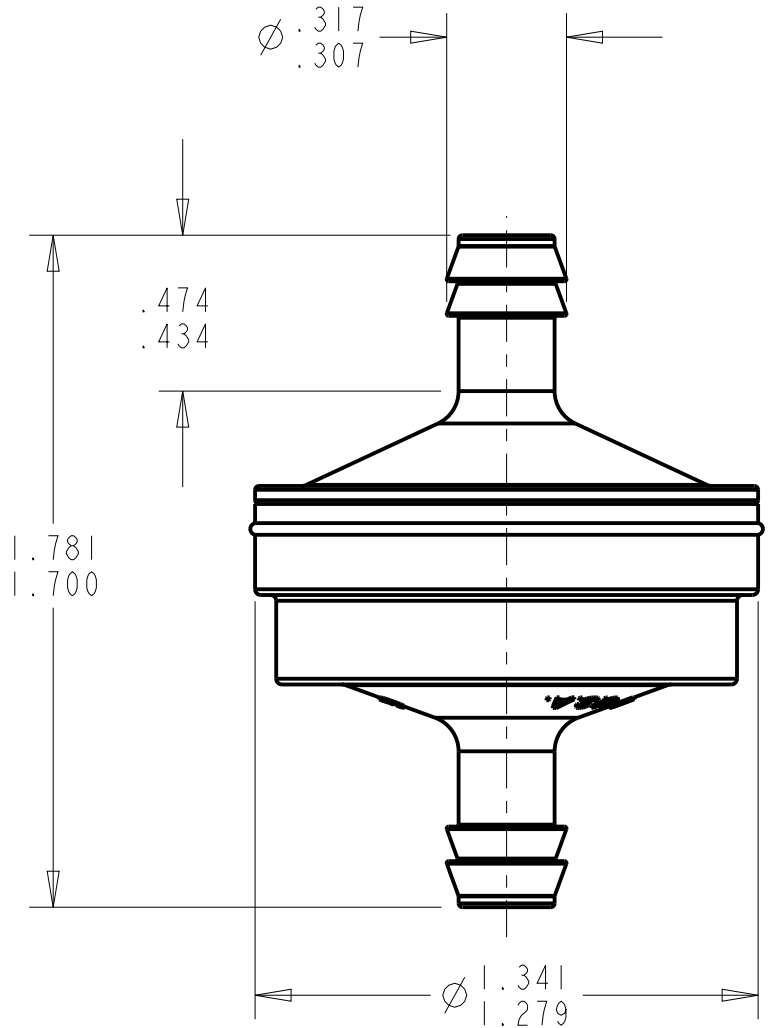
NOTES:

1.  Indicates Control Characteristic.
2. Filter assembly leakage rate must not exceed 0.32 cc/min leak rate, when subjected to 15 psi. 
3. Reference Plastisonics Part# FF300R.



PRO/E

SCALE 1



Cap
4453-00-2664 (Red Nylon)

Filter Screen Element
5455-00-4000
100 x 100 Mesh
Stainless Steel
Approx 150 Micron

Housing
4452-00-2664 (Red Nylon)

6	0070	CHANGED STEM LENGTH FROM .406	BM	05-05-14
5	6903	Outside Barb \varnothing changed to $.309 \pm .010$	BF	03-17-09
4	6641	Changed leak standard to .32 cc/min@15 PSI	BF	01-22-08
3	6648	Red color concentrate changed on Cap and Housing components	BF	12-07-07
2	6363	Created PRO/E Models, Assembly & Prints	JZ	04-03-06
NO.	ECN#	REVISION	APPROVAL	DATE

DRAWN BY	J. Zielinski	DATE	01-27-06
CHK BY	J. Zielinski	DATE	01-27-06
APP BY	J. Zielinski	DATE	01-27-06
MATERIAL			
HARDNESS			
FINISH			

TOLERANCE UNLESS OTHERWISE INDICATED	
DECIMAL \pm	ANGULAR \pm
ENGINEER J. Zielinski	SCALE 2:1
This print and any design thereon is the property of EASTERFILTRATION Division Illinois Tool Works Inc. This print is to be returned upon request or completion of the work for which it was issued. It is to be used only for the purpose for which it was expressly loaned and is not to be copied in any manner, nor is information taken therefrom to be transmitted, or passed on to others without written permission of Illinois Tool Works Inc.	

TW Fastex-Filtration 11411 Price Road / Hebron, Illinois 60034	
NAME Fuel Filter - In Line	
FTA #	PROJ#
PART#	ISSUE
8408-00-9909	6

ALL CHANGES TO OCCUR ON CAD SYSTEM