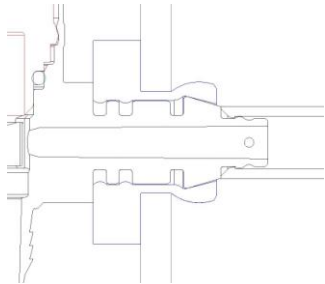


## Q-Turn Valve

Precision Quarter-Turn Fuel Valves

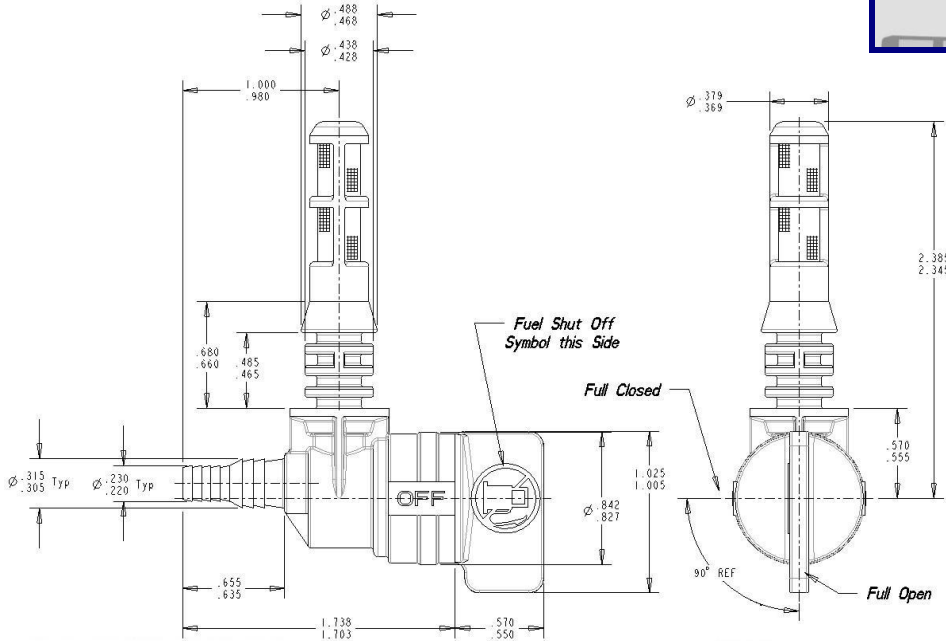
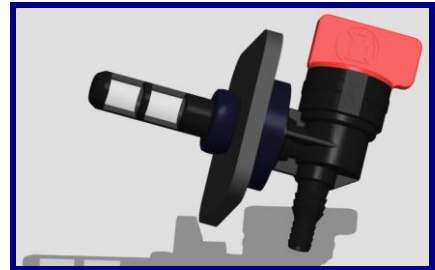
Part No. 7411-XX-9909 (Patented)

### TECHNICAL SPECIFICATION



Section view of valve installed in a tank with a bushing

Rendering of 7411-



Performance Properties		Typical Value
Connection method <sup>3</sup>		Filter side pressed into bushing in tank & 1/4 inch OR 3/16 inch inside diameter tubing
Temperature range		-30°C (-22°F) to 80°C (176°F)
Component materials	Spindle	Red Nylon (for quick identification)
	Body	Black Heat-Stabilized Nylon
	Sealing Bushing	Nitrile Rubber
	O-Ring	Fluorosilicone
	Filter	Nylon with molded in 100 Micron filter element
Flow Rate of Valve <sup>4</sup>		5.5 gallons per hour

- Valves are 100% leak tested in the 'ON' (open) and 'OFF' (closed) positions with 10psi air pressure.
- Valves are shipped in the 'ON' (open) position.
- To install the 3800-00 bushing (grommet) drill a 1/2" diameter hole in the fuel tank.
- Valve flow rate = 5.5gph at 3.5in. fluid head using water or fluid with equivalent viscosity.
- Valves open and close easily with a 1/4 (quarter) turn of the red spindle in the direction indicated above.