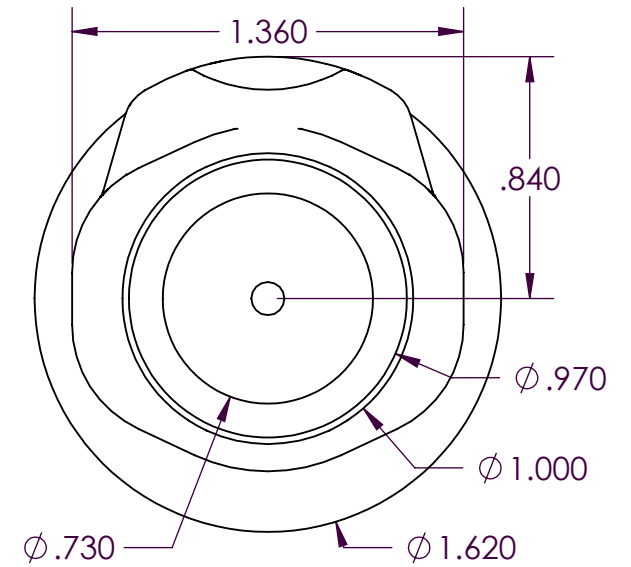
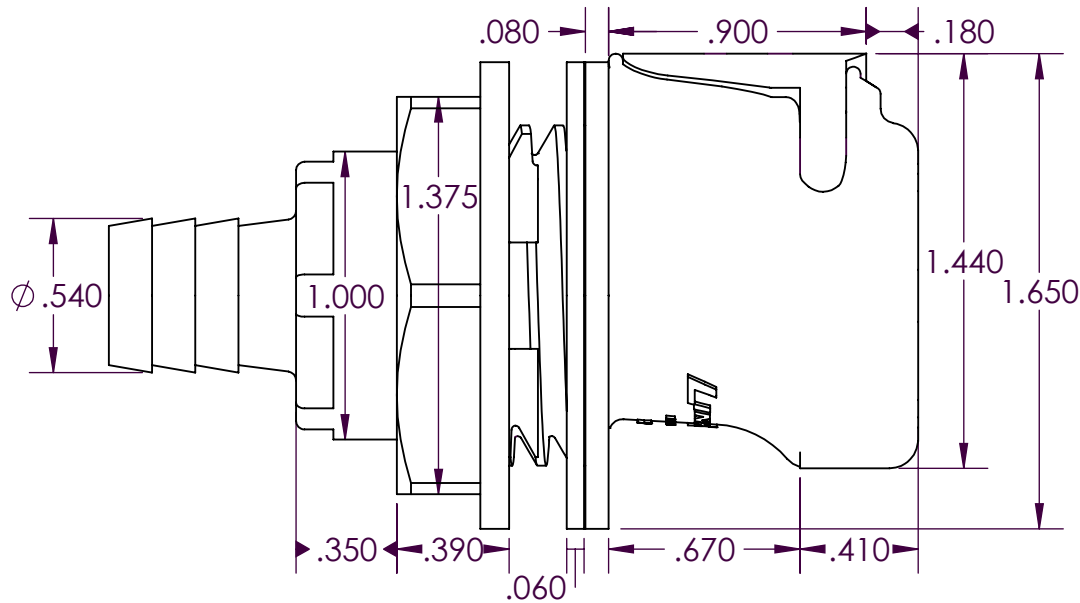


SCALE 1 : 1



PROPRIETARY AND CONFIDENTIAL

Description

THE INFORMATION CONTAINED IN THIS DRAWING IS THE SOLE PROPERTY OF INDUSTRIAL SPECIALTIES MFG. AND IS MED SPECIALITES. ANY REPRODUCTION IN PART OR AS A WHOLE WITHOUT THE WRITTEN PERMISSION OF INDUSTRIAL SPECIALTIES MFG. AND IS MED SPECIALITES IS PROHIBITED.

1/2" Hose Barb, Valved Thumb-Latch Type Panel Mount Hose Barb Socket Coupling with Latch Guard, 3/8" Flow, Medical Grade Polypropylene Body, Terminations, Panel Mount Nut, Internal Valve and Thumb-Latch, Stainless Steel Latch and Internal Valve Springs, Peroxide-Cured EPDM O-Ring Seal and Panel Mount Sealing Gasket

NAME DATE
DRAWN BY: SCW 15-JUL-2016

PART# REV
60PPV-SE3-08 1

SHEET 1 OF 4

SCALE 3 : 2

DO NOT SCALE DRAWING



Industrial Specialties Mfg.
IS Med Specialties

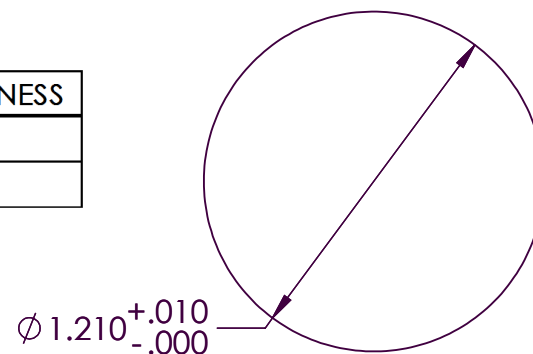
Specifications

Body and Termination Material	Medical Grade Polypropylene
Seal Material Option	Peroxide-cured EPDM
Thumb Latch Material	Medical Grade Polypropylene
Thumb Latch Spring Material	304 Stainless Steel
Internal Valve Material	Medical Grade Polypropylene
Internal Valve Spring Material	316 Stainless Steel
Panel Mount Nut	Medical Grade Polypropylene
Operating Pressure Range	Vacuum to 60 psi (4.2 bar)
Operating Temperature Range	32° F to 160° F (0° C to 71° C)
Flow Capacity	3/8" Size
Barb Size	1/2" ID, 12.7mm ID
Panel Mount Sealing Gasket	Peroxide-cured EPDM
Compatibility Statement	<p>It is the sole responsibility of the system designer and user to select products suitable for their specific application requirements and to ensure proper installation, operation, and maintenance of these products.</p> <p>Material compatibility, product ratings and application details should be considered in the selection. Improper selection or use of products described herein can cause personal injury or product damage.</p>

Panel Mount Dimensions

	PANEL OPENING	MAX PANEL THICKNESS	MIN PANEL THICKNESS
SOCKETS	See Drawing	0.3"	0.03"
PLUGS	1.21"	0.3"	0.03"

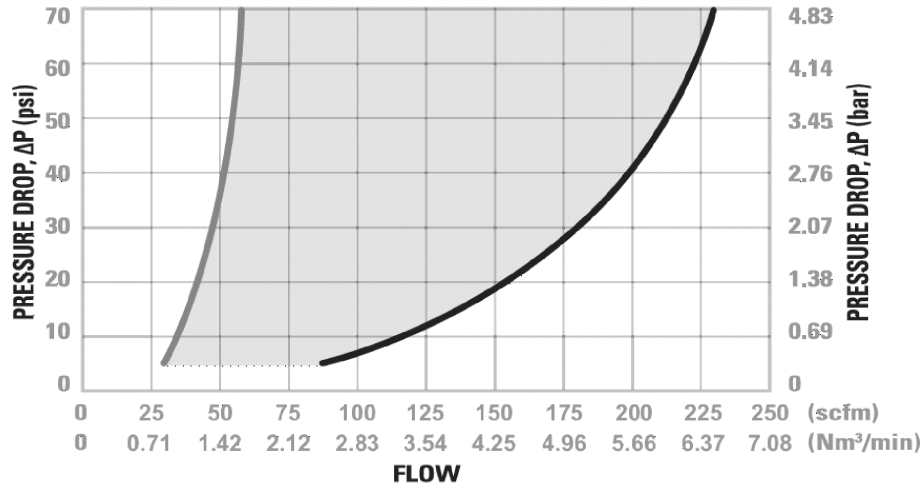
PANEL NUT HEX SIZE
1.375"



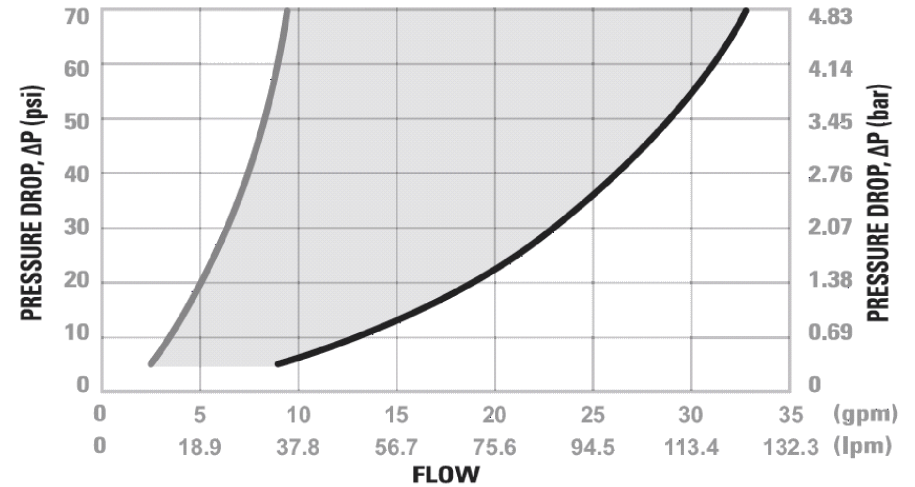
60PPV-SE3-08

SHEET 2 OF 4

60PP Series Air Flow



60PP Series Water Flow



Specific coupling combination flow rates can be determined by using this formula:

$$Q = C_v \times \text{SQRT}(\Delta P/S)$$

SQRT = Square root

Q = Flow rate in gallons per minute

C_v = Average flow rate (see chart)

ΔP = Pressure drop across coupling (psi)

S = Specific gravity of liquid

Plugs:	60PPV- PE2-06	60PPV- PE2-06	60PPV- PE2-08	60PPV- PE2-06	60PPV- PE4-06	60PPV- PE4-06	60PPV- PE4-08
60PPV-SE3-08	1.25	1.23	1.61	1.52	1.13	1.11	1.45

Plugs:	60PPV- PE4-08	60PPV- PE1-06	60PPV- PE1-06	60PPV- PE1-08	60PPV- PE1-08	60PPV- PE2-12	60PPV- PE2-12
60PPV-SE3-08	1.37	1.79	1.60	1.68	1.56	-	-

60PPV-SE3-08

SHEET 3 OF 4

Sterilization and Disinfectant Compatibility

Material	Formalin	Isopropyl Alcohol (IPA)	Ethyl Alcohol	Ethylene Oxide (EtO)	Autoclave	E-Beam (50 kilorays)	GAMMA 5 (50 kilograys)	Dry Heat (250° F)
Polypropylene	Y	Y	Y	Y	N	Y	Y	N

Key: Y = Excellent, Recommended, N = Not Recommended

Sterilization Methods:

Disinfectants: Sterilized coupled or uncoupled at 70°F (20°C)

Ethylene Oxide, EtO: Sterilized coupled or uncoupled, up to 5 repetitions, 4 hours maximum, 100% EtO at 110°F (43°C)

Autoclave: Sterilize uncoupled only, 30 minutes Max, 10 repetitions maximum, 250°F (121°C) maximum

Electron Beam (E-Beam): Sterilize coupled or uncoupled, 50 kilograys maximum cumulative exposure

GAMMA: Sterilize coupled or uncoupled, 50 kilograys maximum cumulative exposure

Dry Heat: Sterilize uncoupled only, 250°F (121°C) 12 hours maximum

60PPV Series Temperature

