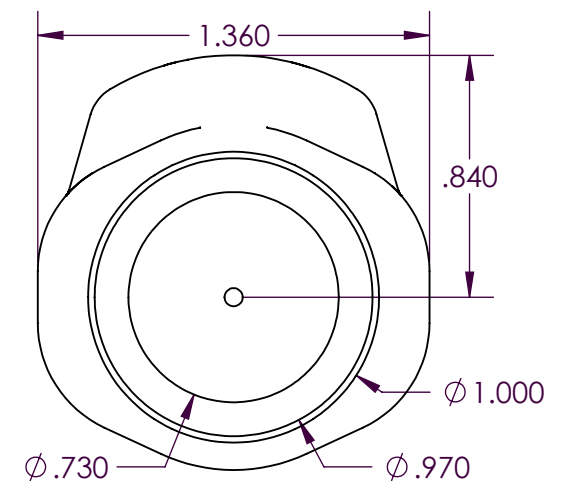


SCALE 1 : 1



PROPRIETARY AND CONFIDENTIAL

THE INFORMATION CONTAINED IN THIS DRAWING IS THE SOLE PROPERTY OF INDUSTRIAL SPECIALTIES MFG. AND IS MED SPECIALITES. ANY REPRODUCTION IN PART OR AS A WHOLE WITHOUT THE WRITTEN PERMISSION OF INDUSTRIAL SPECIALTIES MFG. AND IS MED SPECIALITES IS PROHIBITED.

## Description

1/2" Hose Varb, Valved Thumb-Latch Type in-Line Hose Barb Socket Coupling with Latch Guard, 3/8" Flow, Food Grade Udel® Polysulfone Body, Terminations, Internal Valve and Thumb-Latch, Stainless Steel Internal Valve and Latch Springs, EPDM O-Ring Seal

DRAWN BY:

NAME

SCW

DATE

06-SEP-2016

PART#

60PSV-SE2-08

REV

1

SHEET 1 OF 4

SCALE 3 : 2

DO NOT SCALE DRAWING

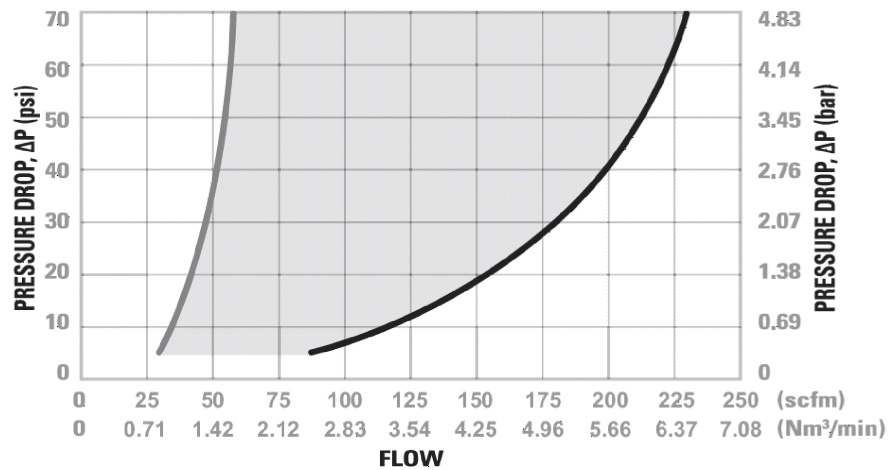


**Industrial Specialties Mfg.**  
**IS Med Specialties**

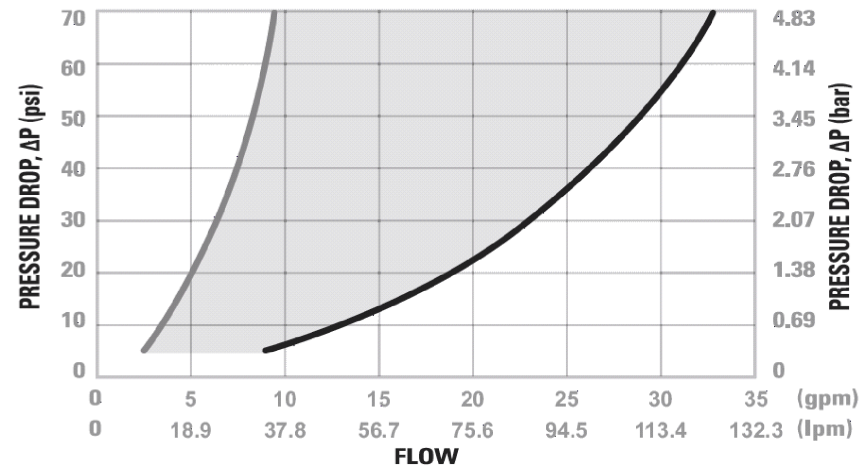
## Specifications

Body and Termination Material	Food Grade Udel® Polysulfone
Seal Material Option	Peroxide-cured EPDM
Thumb Latch Material	Food Grade Udel® Polysulfone
Thumb Latch Spring Material	304 Stainless Steel
Internal Valve Material	Food Grade Udel® Polysulfone
Internal Valve Spring Material	316 Stainless Steel
Operating Pressure Range	Vacuum to 125 psi (8.6 bar)
Operating Temperature Range	-40° F to 280° F (-40° C to 138° C)
Flow Capacity	3/8" Size
Barb Size	1/2" ID, 9.5mm ID
Compatibility Statement	<p>It is the sole responsibility of the system designer and user to select products suitable for their specific application requirements and to ensure proper installation, operation, and maintenance of these products.</p> <p>Material compatibility, product ratings and application details should be considered in the selection. Improper selection or use of products described herein can cause personal injury or product damage.</p>

## 60PS Series Air Flow



## 60PS Series Water Flow



Specific coupling combination flow rates can be determined by using this formula:

$$Q = C_v \times \text{SQRT}(\Delta P / S)$$

SQRT = Square root

Q = Flow rate in gallons per minute

$C_v$  = Average flow rate (see chart)

$\Delta P$  = Pressure drop across coupling (psi)

S = Specific gravity of liquid

### $C_v$ Values for the 60PSV-SE2-08

#### Valved In-Line Hose Barb Socket Coupling

Plugs:	60PP- PE2-06	60PPV- PE2-06	60PP- PE2-08	60PPV- PE2-06	60PP- PE4-06	60PPV- PE4-06	60PPV- PE4-08
60PSV-SE2-08	1.25	1.23	1.61	1.52	1.13	1.11	1.45

Plugs:	60PPV- PE4-08	60PP- PE1-06	60PPV- PE1-06	60PP- PE1-08	60PPV- PE1-08	60PP- PE2-12	60PPV- PE2-12
60PSV-SE2-08	1.37	1.79	1.60	1.68	1.56	-	-

60PSV-SE2-08

SHEET 3 OF 4

## Sterilization and Disinfectant Compatibility

Material	Formalin	Isopropyl Alcohol (IPA)	Ethyl Alcohol	Ethylene Oxide (EtO)	Autoclave	E-Beam (50 kilorays)	GAMMA 5 (50 kilograys)	Dry Heat (250° F)
Polysulfone	Y	Y	Y	Y	Y	Y	Y	Y

Key: Y = Excellent, Recommended, N = Not Recommended

### Sterilization Methods:

**Disinfectants:** Sterilized coupled or uncoupled at 70°F (20°C)

**Ethylene Oxide, EtO:** Sterilized coupled or uncoupled, up to 5 repetitions, 4 hours maximum, 100% EtO at 110°F (43°C)

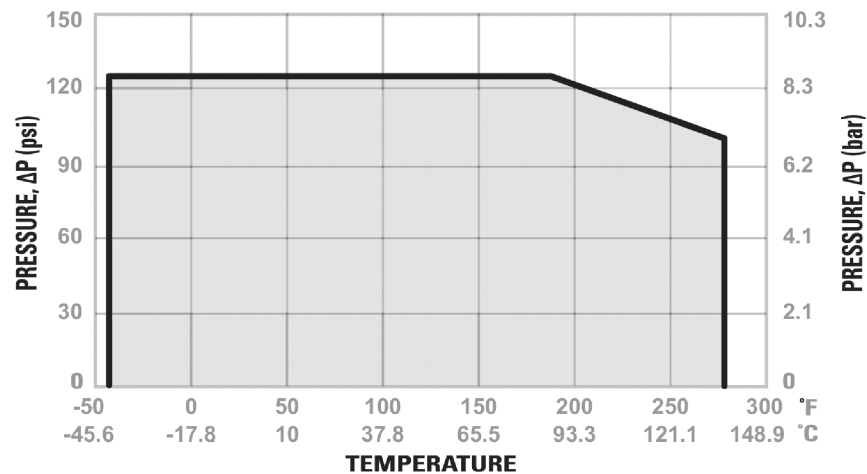
**Autoclave:** Sterilize uncoupled only, 30 minutes Max, 10 repetitions maximum, 250°F (121°C) maximum

**Electron Beam (E-Beam):** Sterilize coupled or uncoupled, 50 kilograys maximum cumulative exposure

**GAMMA:** Sterilize coupled or uncoupled, 50 kilograys maximum cumulative exposure

**Dry Heat:** Sterilize uncoupled only, 250°F (121°C) 12 hours maximum

## 60PS Series Temperature



60PSV-SE2-08

SHEET 4 OF 4