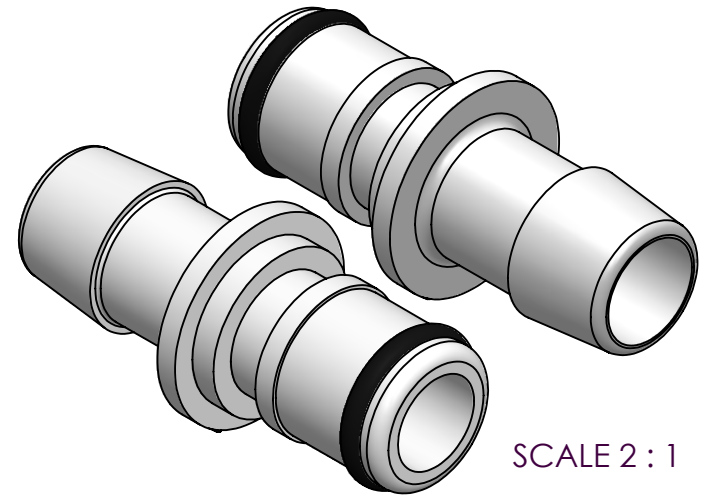
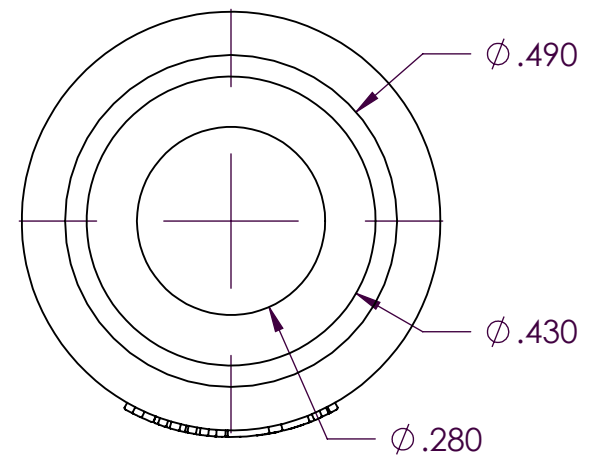
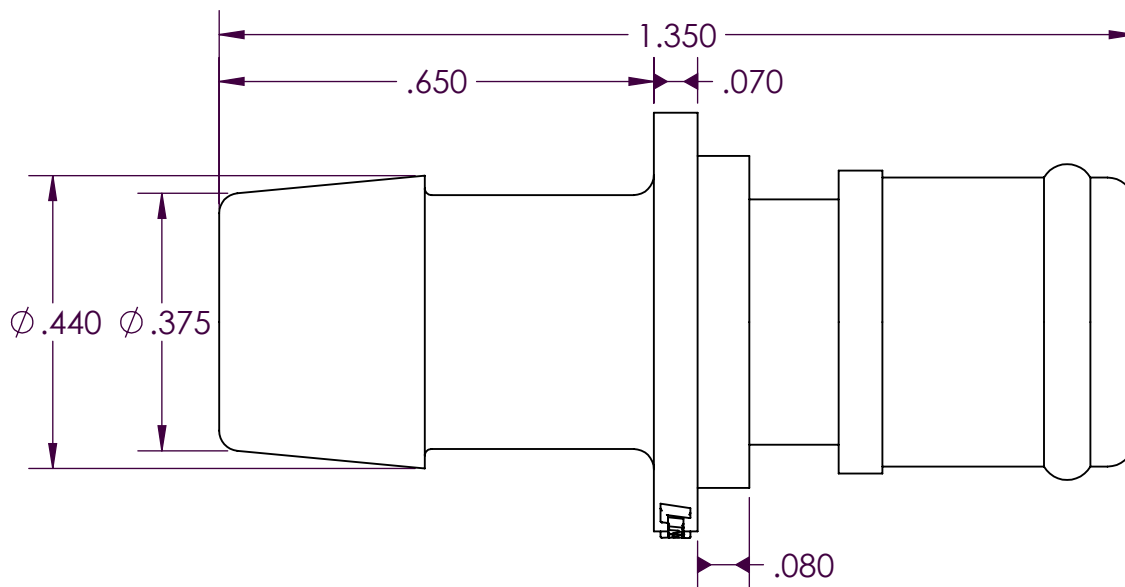


LEFT VIEW



SCALE 2 : 1



PROPRIETARY AND CONFIDENTIAL

Description

THE INFORMATION CONTAINED IN THIS DRAWING IS THE SOLE PROPERTY OF INDUSTRIAL SPECIALTIES MFG. AND IS MED SPECIALITES. ANY REPRODUCTION IN PART OR AS A WHOLE WITHOUT THE WRITTEN PERMISSION OF INDUSTRIAL SPECIALTIES MFG. AND IS MED SPECIALITES IS PROHIBITED.

3/8" Hose Barb,
Non-Valved In-Line Barb Plug Coupling,
1/4" Flow,
Glass Filled Polypropylene Body and Terminations,
EPDM O-Ring Seal

NAME	DATE
DRAWN BY: SCW	23-JUN-2016

PART# 50GP-PF5-06

REV 1

SHEET 1 OF 3

SCALE 7 : 2

DO NOT SCALE DRAWING

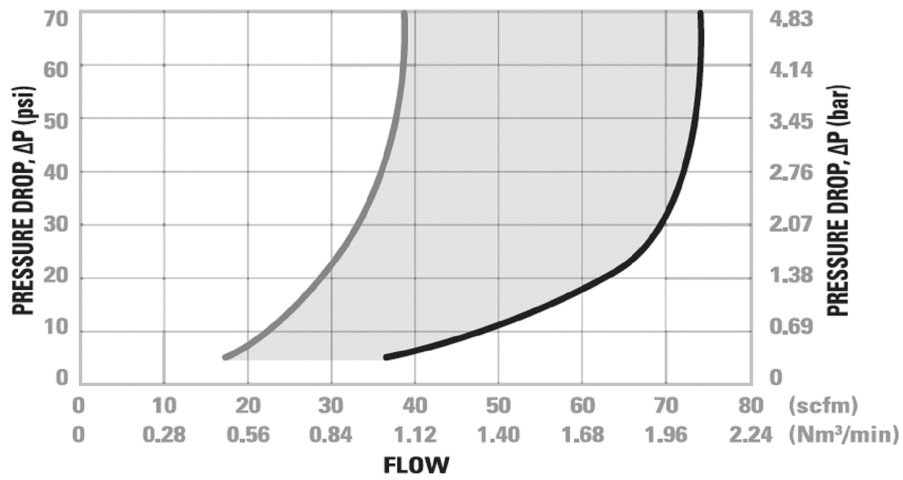


Industrial Specialties Mfg.
IS Med Specialties

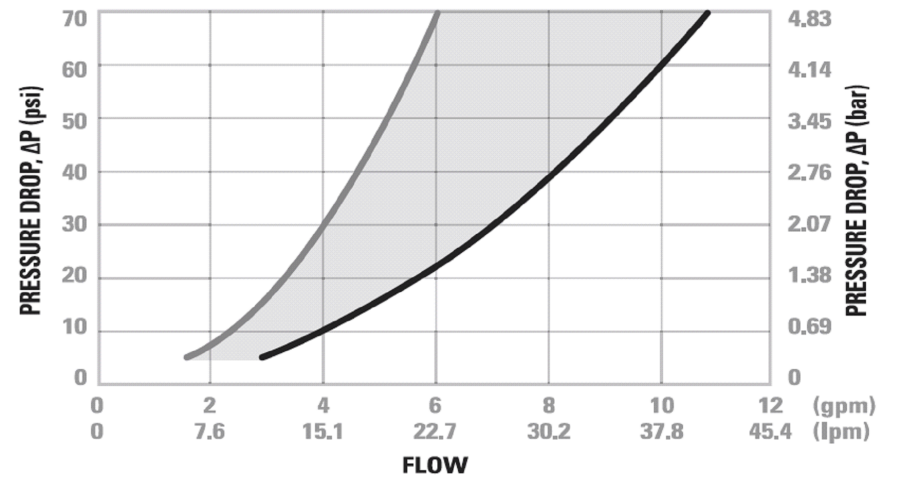
Specifications

Body and Termination Material	Glass Filled Polypropylene
Seal Material Option	EPDM O-ring
Operating Pressure Range	Vacuum to 120 psi (8.3 bar)
Operating Temperature Range	-40° F to 180° F (-40° C to 82° C)
Flow Capacity	1/4" Size
Barb Size	3/8" ID Tube Size (9.5mm ID)
Compatibility Statement	<p>It is the sole responsibility of the system designer and user to select products suitable for their specific application requirements and to ensure proper installation, operation, and maintenance of these products.</p> <p>Material compatibility, product ratings and application details should be considered in the selection. Improper selection or use of products described herein can cause personal injury or product damage.</p>

50GP Series Air Flow



50GP Series Water Flow



Valved Socket & Plug



Valved & Non-Valved Coupling Set



Non-Valved Socket & Plug



These graphs are intended to give you a general idea of the performance capabilities of the product line.