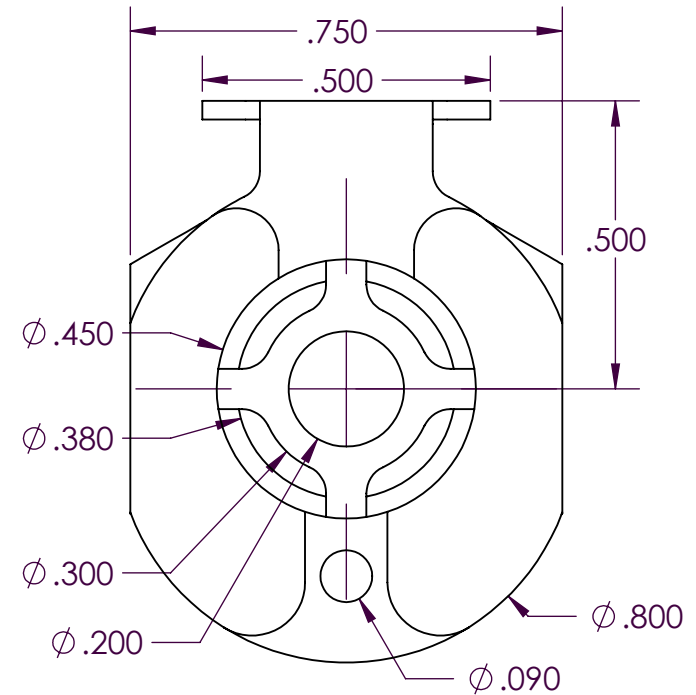
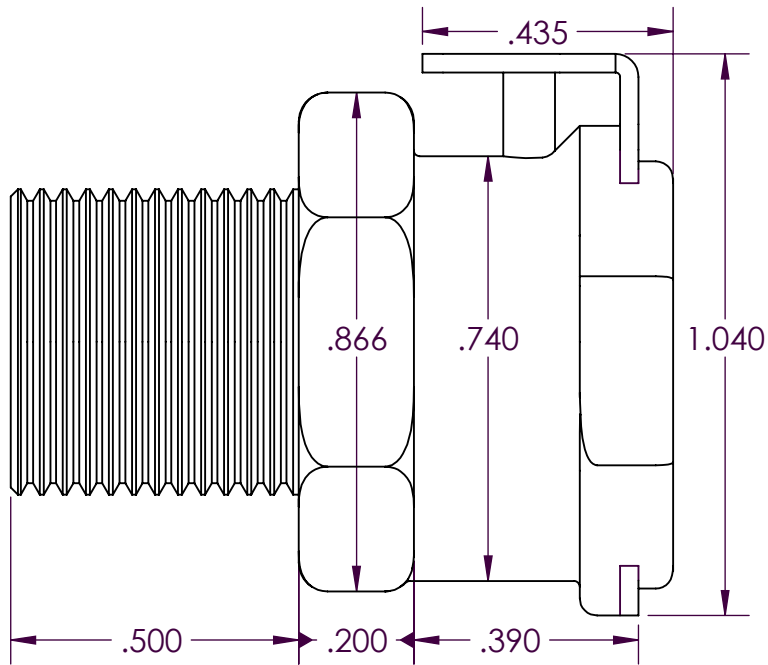


SCALE 2 : 1



PROPRIETARY AND CONFIDENTIAL

Description

THE INFORMATION CONTAINED IN THIS DRAWING IS THE SOLE PROPERTY OF INDUSTRIAL SPECIALTIES MFG. AND IS MED SPECIALITES. ANY REPRODUCTION IN PART OR AS A WHOLE WITHOUT THE WRITTEN PERMISSION OF INDUSTRIAL SPECIALTIES MFG. AND IS MED SPECIALITES IS PROHIBITED.

1/4" Male NPT,
Valved Thumb-Latch Type Socket Coupling,
1/4" Flow, Gray Polypropylene Body,
Internal Valve and Terminations,
Stainless Steel Thumb-Latch, Springs
and Pins, Buna-N O-Ring Seals

| | |
|---------------|-------------|
| NAME | DATE |
| DRAWN BY: SCW | 21-MAR-2016 |

| | |
|--------------|-----|
| PART# | REV |
| 40PPV-SE1-04 | 1 |

SHEET 1 OF 3

SCALE 3 : 1

DO NOT SCALE DRAWING

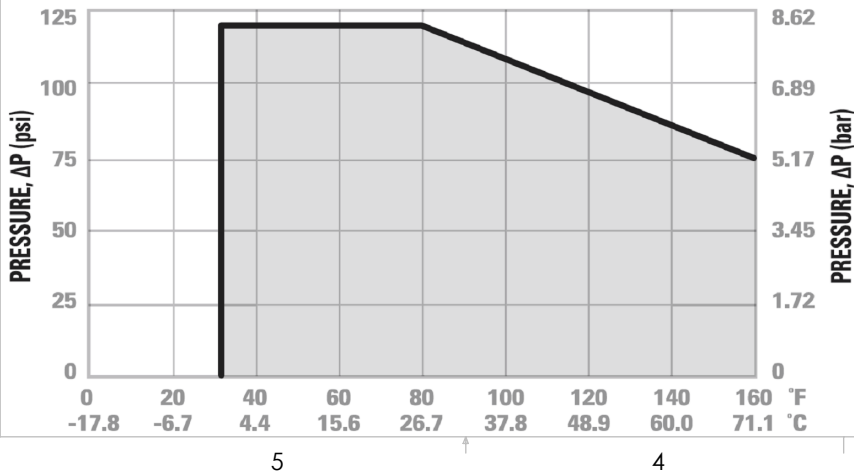


Industrial Specialties Mfg.
IS Med Specialties

Specifications

| | |
|--------------------------------|-------------------------------------------------------------------------------------------------------------------------------------------------------------------------------------------------------------------------------------------------------------------------------------------------------------------------------------------------------------------------------------------------------------------------------------------------|
| Body and Termination Material | Medical Grade Polypropylene |
| Standard Color Option | Gray |
| Seal Material Option | Peroxide-cured EPDM |
| Internal Valve Material | Medical Grade Polypropylene |
| Internal Valve Spring Material | 316 Stainless Steel |
| Thumb-latch Material | 301 Stainless Steel |
| Thumb-latch Spring Material | 304 Stainless Steel |
| Pin Material | 316 Stainless Steel |
| Pin Spring Material | 302 Stainless Steel |
| Operating Pressure Range | Vacuum to 120 psi (8.3 bar) |
| Operating Temperature Range | 32° F to 160° F (0° C to 71° C) |
| Flow Capacity | 1/4" Size |
| Thread Size | 1/4" NPT |
| Sterilization | Gamma; 50 kGy irradiation max |
| Compatibility Statement | <p>It is the sole responsibility of the system designer and user to select products suitable for their specific application requirements and to ensure proper installation, operation, and maintenance of these products.</p> <p>Material compatibility, product ratings and application details should be considered in the selection. Improper selection or use of products described herein can cause personal injury or product damage.</p> |

40PP Series Temperature

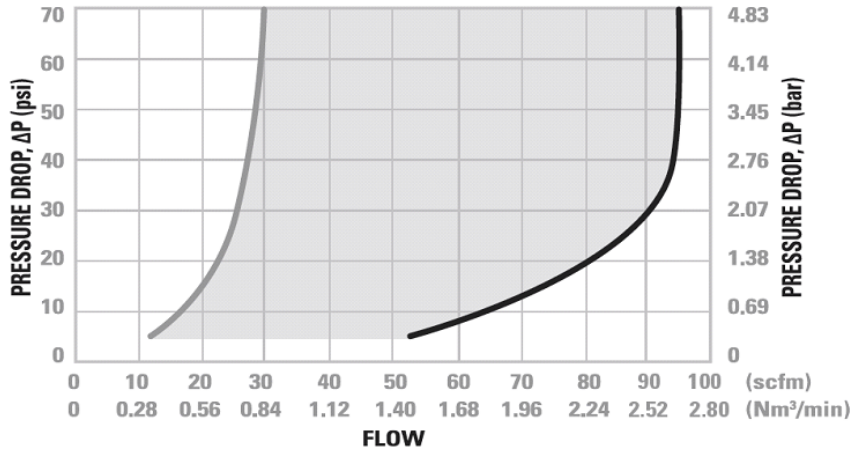


40PP Series Medical Grade Polypropylene Sterilization and Disinfectant Compatibility

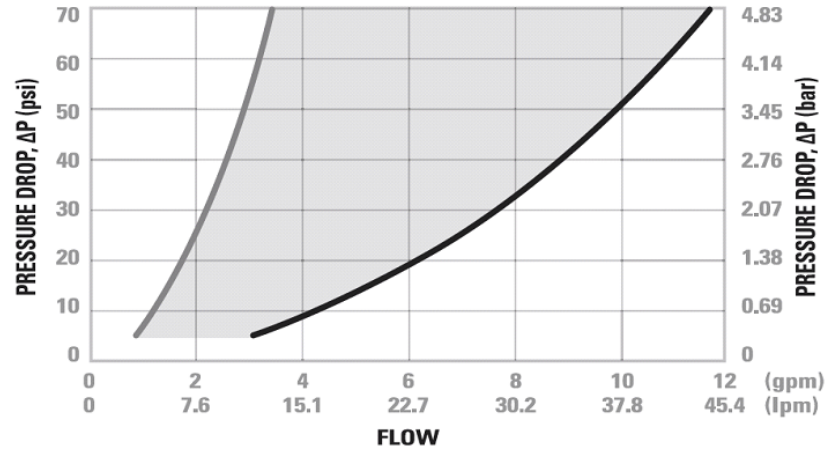
| | | | |
|-----------|-------------------|---------------|----------------------|
| Formalin | Isopropyl Alcohol | Ethyl Alcohol | Ethylene Oxide (EtO) |
| Excellent | Excellent | Excellent | Excellent |

| | | | |
|------------|-----------------|----------------------|-------------------|
| Autoclave | E-Beam (50 kGy) | Gamma 5 Mrad (50kGy) | Dry Heat (250° F) |
| Do Not Use | Excellent | Excellent | Do Not Use |

40PP Series Air Flow



40PP Series Water Flow



Specific coupling combination flow rates can be determined by using this formula:

$$Q = C_v \times \text{SQRT}(\Delta P/S)$$

SQRT = Square root

Q = Flow rate in gallons per minute

C_v = Average flow rate (see chart)

ΔP = Pressure drop across coupling (psi)

S = Specific gravity of liquid

C_v Values for the 40PPV-SE1-04

Valved Male Thread Socket Coupling

| Plugs: | 40PPV-PE2-04 | 40PPV-PE2-04 | 40PPV-PE2-06 | 40PPV-PE2-06 | 40PPV-PE9-06 | 40PPV-PE9-06 |
|--------|--------------|--------------|--------------|--------------|--------------|--------------|
| | 40PPV-SE1-04 | 0.41 | 0.65 | 0.50 | 0.81 | 0.48 |

| Plugs: | 40PPV-PE1-04 | 40PPV-PE1-04 | 40PPV-PE3-04 | 40PPV-PE3-04 | 40PPV-PE3-06 | 40PPV-PE3-06 |
|--------|--------------|--------------|--------------|--------------|--------------|--------------|
| | 40PPV-SE1-04 | 0.45 | 0.80 | 0.41 | 0.65 | 0.50 |

40PPV-SE1-04

SHEET 3 OF 3