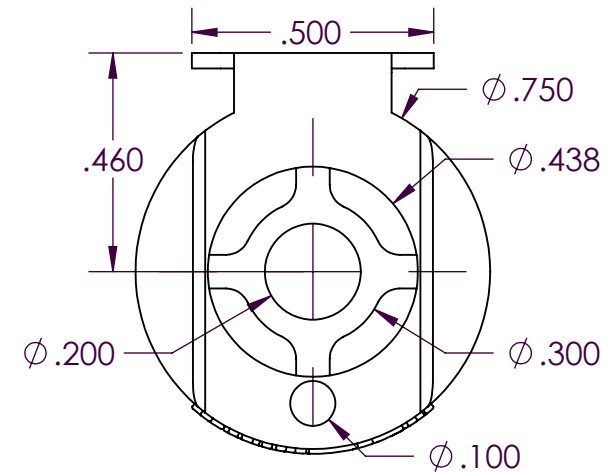
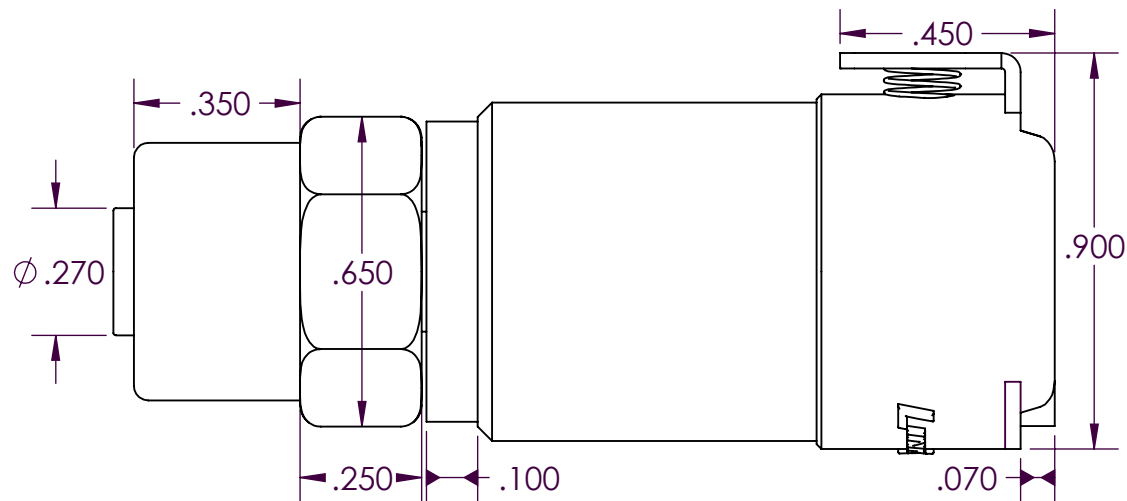


SCALE 3 : 2



PROPRIETARY AND CONFIDENTIAL

THE INFORMATION CONTAINED IN THIS DRAWING IS THE SOLE PROPERTY OF INDUSTRIAL SPECIALTIES MFG. AND IS MED SPECIALITES. ANY REPRODUCTION IN PART OR AS A WHOLE WITHOUT THE WRITTEN PERMISSION OF INDUSTRIAL SPECIALTIES MFG. AND IS MED SPECIALITES IS PROHIBITED.

Description

3/8" OD Tube Size, In-Line PTF Socket Valved Thumb-Latch Type Coupling, 1/4" Flow, Chrome Plated Brass Body and Terminations, Acetal Internal Valve, Stainless Steel Thumb-Latch, Springs and Pin, Buna-N O-Ring Seal

DRAWN BY:

NAME

SCW

DATE

12-APR-2016

PART#

40CBV-SB9-06

REV

1

SHEET 1 OF 3

SCALE 5 : 2

DO NOT SCALE DRAWING

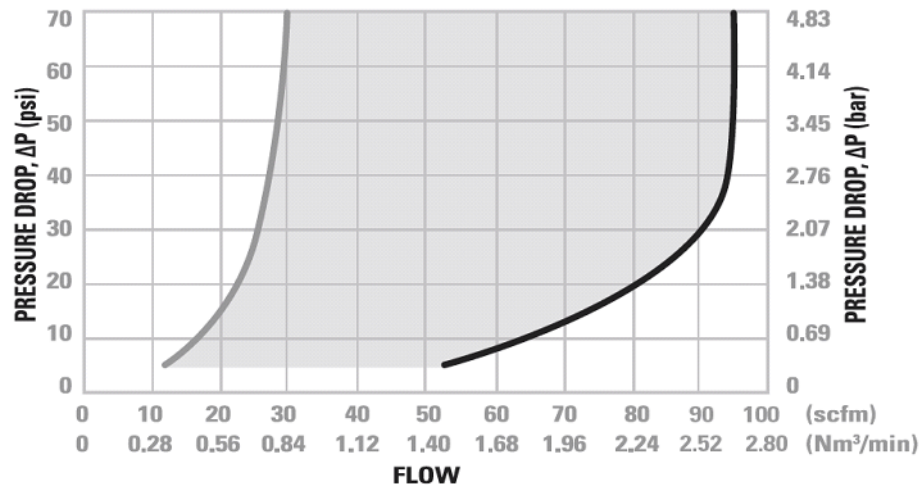


Industrial Specialties Mfg.
IS Med Specialties

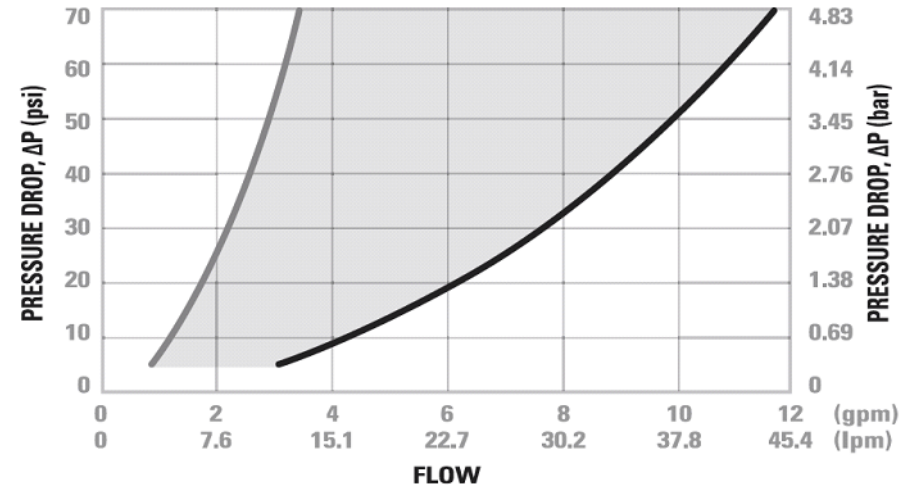
Specifications

Body and Termination Material	NSF Food Contact Compliant Chrome Plated Brass
Internal Valve Material	Acetal (POM)
Internal Valve Spring	316 Stainless Steel
Seal Material Option	FDA and NSF Compliant Buna-N O-ring Seal
Thumb-latch Material	301 Stainless Steel
Thumb-latch Spring Material	304 Stainless Steel
Pin Material	316 Stainless Steel
Pin Spring Material	302 Stainless Steel
PTF (Ferrules Polytube Fitting) Nut	Electrodeposited Nickel Plated Brass
Operating Pressure Range	Vacuum to 250 psi (17.3 bar)
Operating Temperature Range	-40° F to 180° F (-40° C to 82° C)
Flow Capacity	1/4" Size
Tube Size	3/8" OD, .25" ID
Metric Tube Size	9.5mm OD, 6.4mm ID
Compatibility Statement	<p>It is the sole responsibility of the system designer and user to select products suitable for their specific application requirements and to ensure proper installation, operation, and maintenance of these products.</p> <p>Material compatibility, product ratings and application details should be considered in the selection. Improper selection or use of products described herein can cause personal injury or product damage.</p>

40CB Series Air Flow



40CB Series Water Flow



These graphs are intended to give you a general idea of the performance capabilities of the product line.