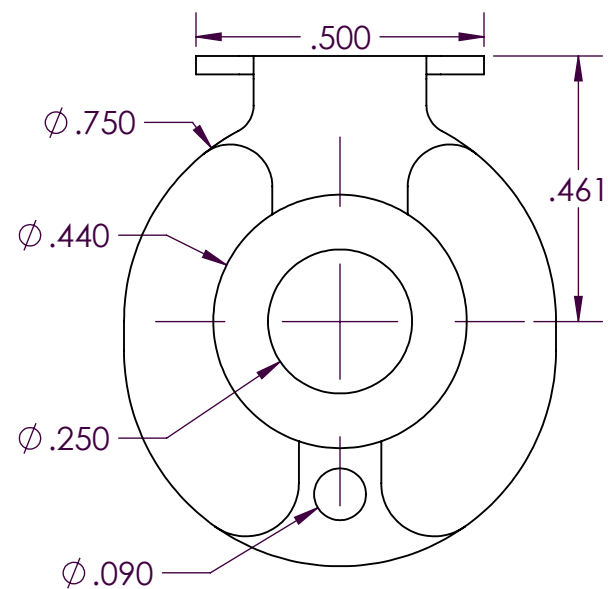


SCALE 2 : 1



PROPRIETARY AND CONFIDENTIAL

## Description

THE INFORMATION CONTAINED IN THIS DRAWING IS THE SOLE PROPERTY OF INDUSTRIAL SPECIALTIES MFG. AND IS MED SPECIALITES. ANY REPRODUCTION IN PART OR AS A WHOLE WITHOUT THE WRITTEN PERMISSION OF INDUSTRIAL SPECIALTIES MFG. AND IS MED SPECIALITES IS PROHIBITED.

1/4" Male NPT, Non-Valved Thumb-Latch Type Socket Coupling, 1/4" Flow, Natural Acetal Body and Terminations, Stainless Steel Thumb-Latch, External Springs and Pins

DRAWN BY: SCW 18-Mar-2015

SHEET 1 OF 3

SCALE 3:1

DO NOT SCALE DRAWING

PART#

40AC-S1-04

REV  
1

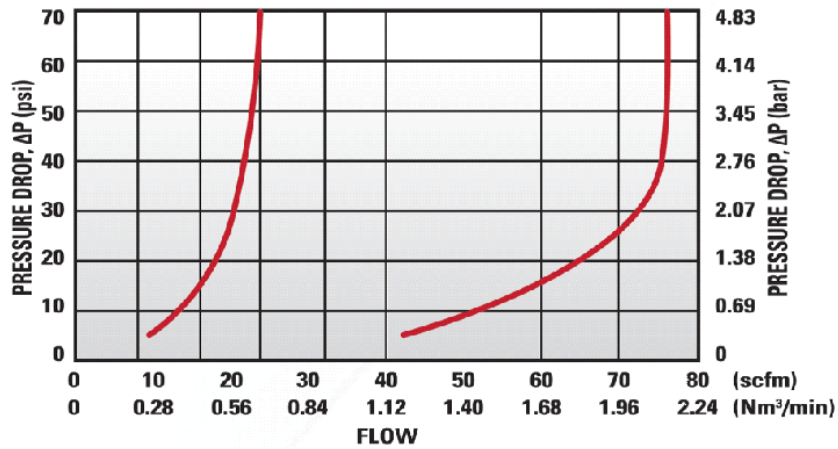


**Industrial Specialties Mfg.**  
**IS Med Specialties**

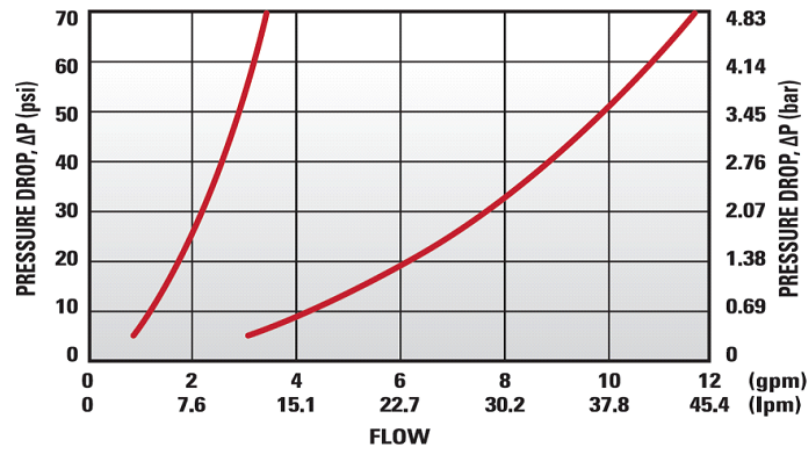
## Specifications

Body and Termination Material	Natural Acetal (POM) - FDA and NSF Compliant for Food Contact
Thumb-latch Material	301 Stainless Steel
Thumb-latch Spring Material	304 Stainless Steel
Pin Material	316 Stainless Steel
Pin Spring Material	302 Stainless Steel
Operating Pressure Range	Vacuum to 120 psi (8.3 bar)
Operating Temperature Range	-40° F to 180° F (-40° C to 82° C)
Flow Capacity	1/4" Size
Thread Size	1/4" NPT
Compatibility Statement	<p>It is the sole responsibility of the system designer and user to select products suitable for their specific application requirements and to ensure proper installation, operation, and maintenance of these products.</p> <p>Material compatibility, product ratings and application details should be considered in the selection. Improper selection or use of products described herein can cause personal injury or product damage.</p>

## 40AC Series Air Flow



## 40AC Series Water Flow



Specific coupling  
combination flow rates can  
be determined by using this  
formula:

$$Q = C_v \times \text{SQRT}(\Delta P/S)$$

SQRT = Square root

Q = Flow rate in gallons per minute

$C_v$  = Average flow rate (see chart)

$\Delta P$  = Pressure drop across coupling (psi)

S = Specific gravity of liquid

### $C_v$ Values for the 40AC-S1-04

#### Non-Valved Male Thread Socket Coupling

Plugs:	40ACV- PB2-04	40AC- PB2-04	40ACV- PB2-06	40AC- PB2-06	40ACV- PB9-04	40AC- PB9-04
40AC-S1-04	0.56	0.84	0.83	1.40	0.35	0.40

Plugs:	40ACV- PB9-06	40AC- PB9-06	40ACV- PB1-04	40AC- PB1-04	40ACV- PB1-06	40AC- PB1-06
40AC-S1-04	0.58	1.04	0.75	1.40	0.78	1.40

40AC-S1-04

SHEET 3 OF 3