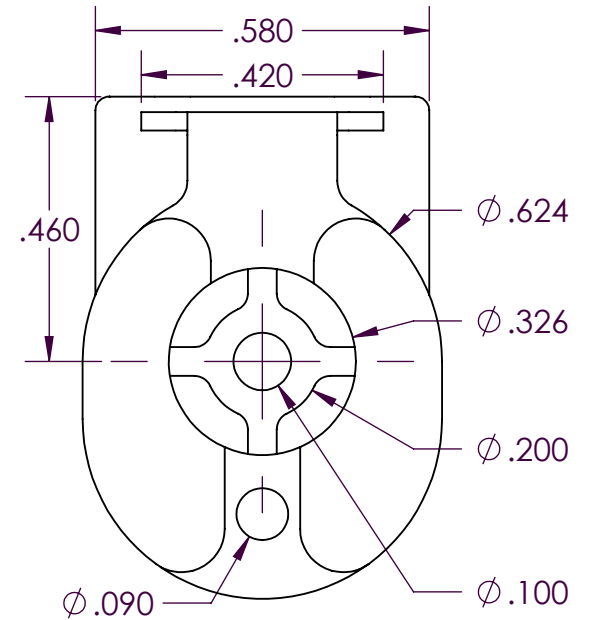
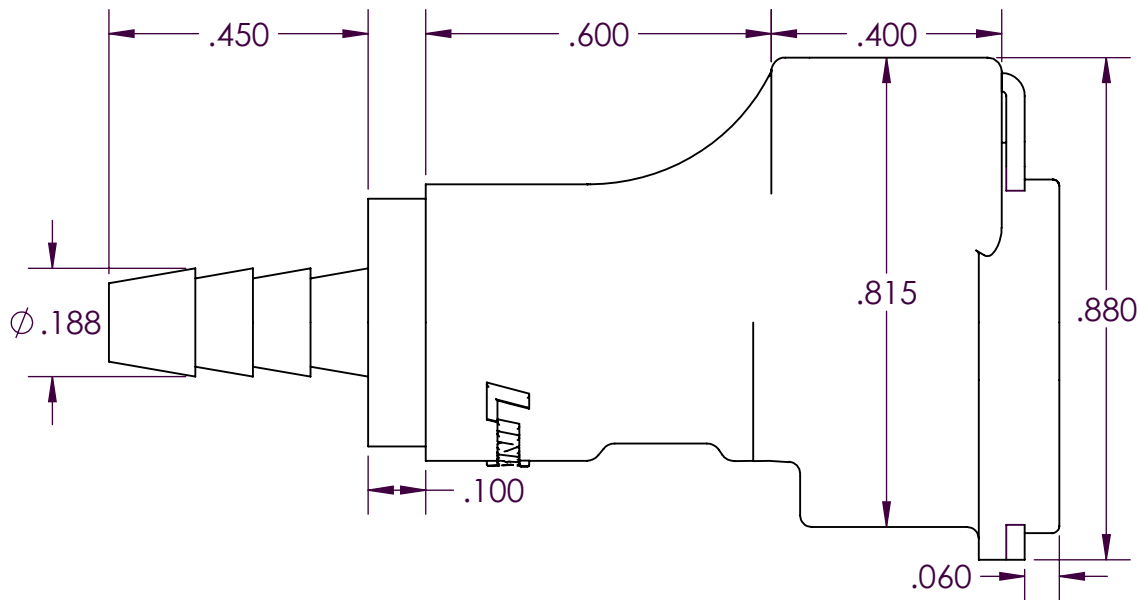


SCALE 1.5 : 1



PROPRIETARY AND CONFIDENTIAL

Description

THE INFORMATION CONTAINED IN THIS DRAWING IS THE SOLE PROPERTY OF INDUSTRIAL SPECIALTIES MFG. AND IS MED SPECIALITES. ANY REPRODUCTION IN PART OR AS A WHOLE WITHOUT THE WRITTEN PERMISSION OF INDUSTRIAL SPECIALTIES MFG. AND IS MED SPECIALITES IS PROHIBITED.

1/8" Hose Barb,
Valved In-Line Hose Barb Socket
Thumb-Latch Type Coupling,
1/8" Flow,
Gray Polypropylene Body and Terminations,
Stainless Steel Thumb-Latch, Springs and Pins

NAME DATE
DRAWN BY: SCW 08-Dec-14

PART# REV
20PPV-SE2-02 1

SHEET 1 OF 3

SCALE 3:1

DO NOT SCALE DRAWING

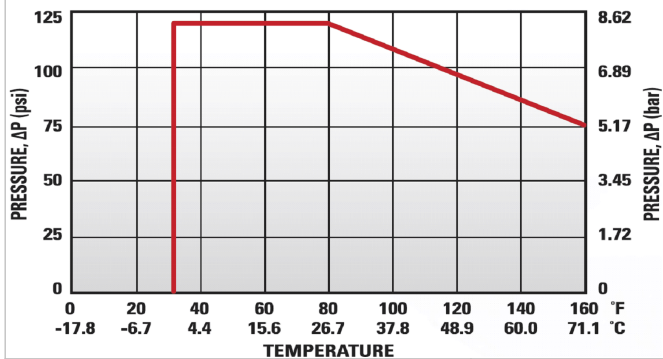


Industrial Specialties Mfg.
IS Med Specialties

Specifications

Body and Termination Material	Medical Grade Polypropylene
Internal Valve Material	Medical Grade Polypropylene
Seal Material Option	Peroxide-cured EPDM O-ring Seal
Standard Color Option	Gray
Internal Valve Spring Material	316 Stainless Steel
Thumb-latch Material	301 Stainless Steel
Thumb-latch Spring Material	304 Stainless Steel
Pin Material	316 Stainless Steel
Pin Spring Material	302 Stainless Steel
Operating Pressure Range	Vacuum to 120 psi (8.3 bar)
Operating Temperature Range	32° F to 160° F (0° C to 71° C)
Flow Capacity	1/8" Size
Tube Size	1/8" ID, 3.2mm ID
Sterilization	Gamma; 50 kGy irradiation max
Compatibility Statement	<p>It is the sole responsibility of the system designer and user to select products suitable for their specific application requirements and to ensure proper installation, operation, and maintenance of these products.</p> <p>Material compatibility, product ratings and application details should be considered in the selection. Improper selection or use of products described herein can cause personal injury or product damage.</p>

20PP Series Temperature

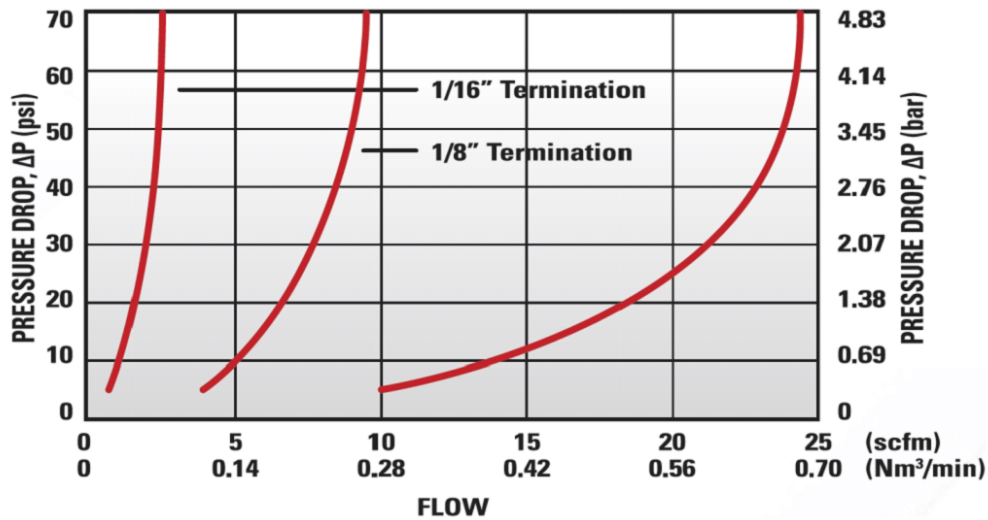


20PP Series Medical Grade Polypropylene Sterilization and Disinfectant Compatibility

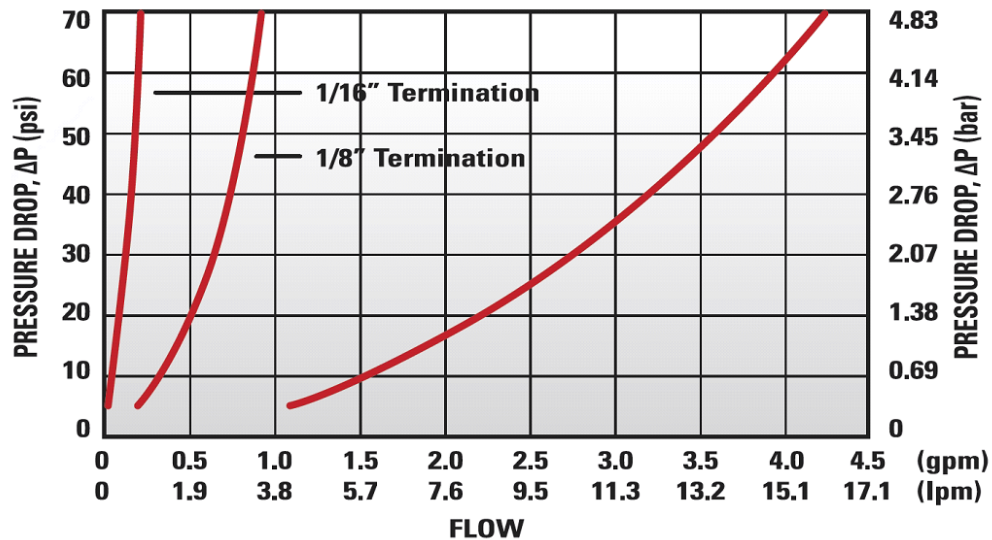
Formalin	Isopropyl Alcohol	Ethyl Alcohol	Ethylene Oxide (EtO)
Excellent	Excellent	Excellent	Excellent

Autoclave	E-Beam (50 kGy)	Gamma 5 Mrad (50kGy)	Dry Heat (250° F)
Do Not Use	Excellent	Excellent	Do Not Use

20PP Series Air Flow



20PP Series Water Flow



These graphs are intended to give you a general idea of the performance capabilities of the product line.