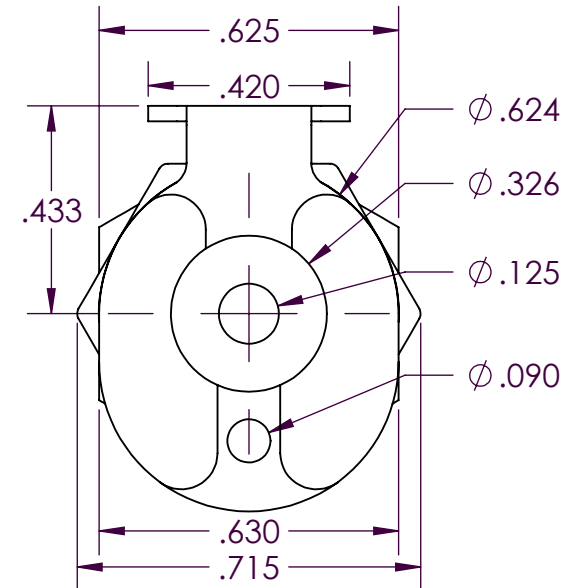
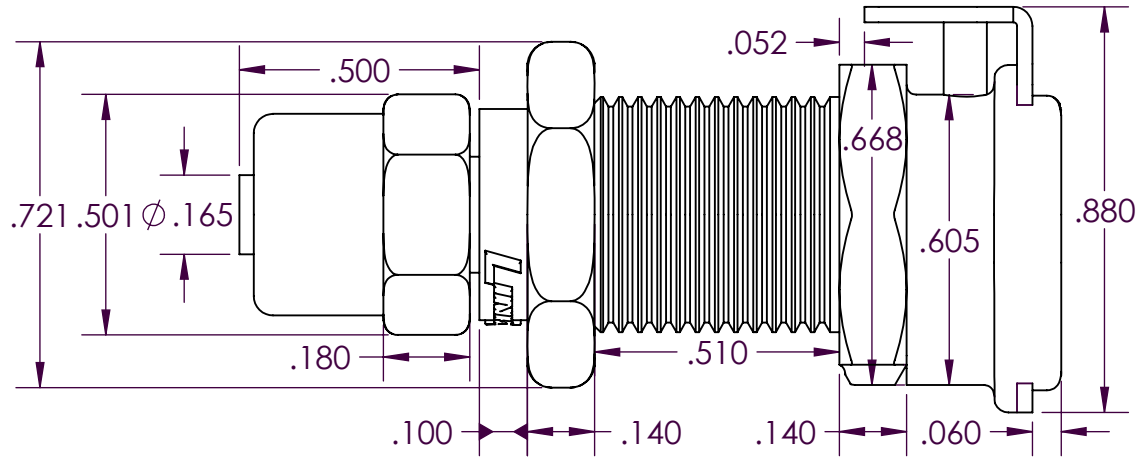
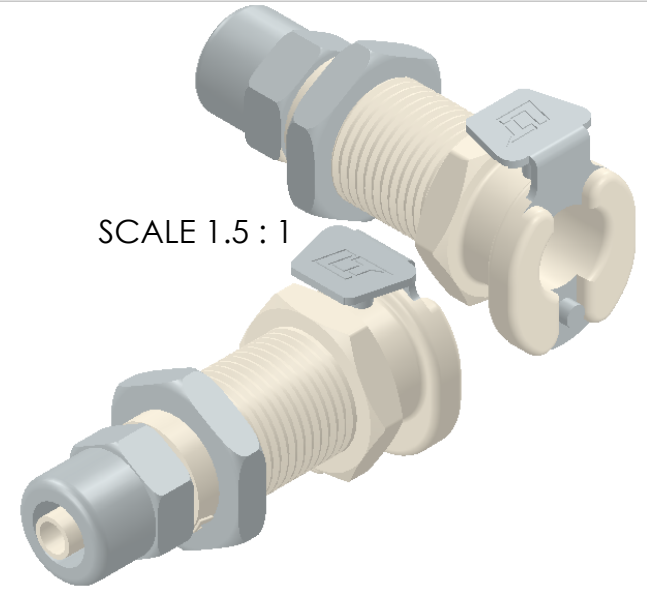


SCALE 1.5 : 1



PROPRIETARY AND CONFIDENTIAL

THE INFORMATION CONTAINED IN THIS DRAWING IS THE SOLE PROPERTY OF INDUSTRIAL SPECIALTIES MFG. AND IS MED SPECIALITES. ANY REPRODUCTION IN PART OR AS A WHOLE WITHOUT THE WRITTEN PERMISSION OF INDUSTRIAL SPECIALTIES MFG. AND IS MED SPECIALITES IS PROHIBITED.

Description

1/4" OD Tube Size, Non-Valved Panel Mount In-Line Thumb-Latch Type PTF Socket Coupling, 1/8" Flow, Polypropylene Body and Terminations, Stainless Steel Thumb-Latch, External Springs and Pins, Nickel Plated Brass PTF Nut, 5/8" 1/2"-24UNS Nickel Plated Brass Panel Nut

DRAWN BY:

NAME

SCW

DATE

20-Jan-15

PART#

20PP-S8-04MALD

REV

1

SHEET 1 OF 3

SCALE 2.5:1

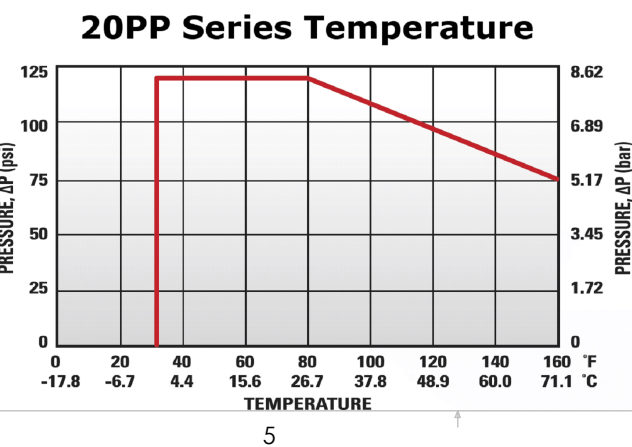
DO NOT SCALE DRAWING



Industrial Specialties Mfg.
IS Med Specialties

Specifications

Body and Termination Material	Medical Grade Polypropylene
Standard Color Option	Almond
Thumb-latch Material	301 Stainless Steel
Thumb-latch Spring Material	304 Stainless Steel
Pin Material	316 Stainless Steel
Pin Spring Material	302 Stainless Steel
PTF (Ferruleless Polytube Fitting) Nut	Electrodeposited Nickel Plated Brass
Panel Mount Nut	5/8" 1/2"-24UNS Electrodeposited Nickel Plated Brass
Operating Pressure Range	Vacuum to 120 psi (8.3 bar)
Operating Temperature Range	32° F to 160° F (0° C to 71° C)
Flow Capacity	1/8" Size
Tube Size	1/4" / 6.4mm OD, .17" / 4.3mm ID
Sterilization	Gamma; 50 kGy irradiation max
Compatibility Statement	<p>It is the sole responsibility of the system designer and user to select products suitable for their specific application requirements and to ensure proper installation, operation, and maintenance of these products.</p> <p>Material compatibility, product ratings and application details should be considered in the selection. Improper selection or use of products described herein can cause personal injury or product damage.</p>

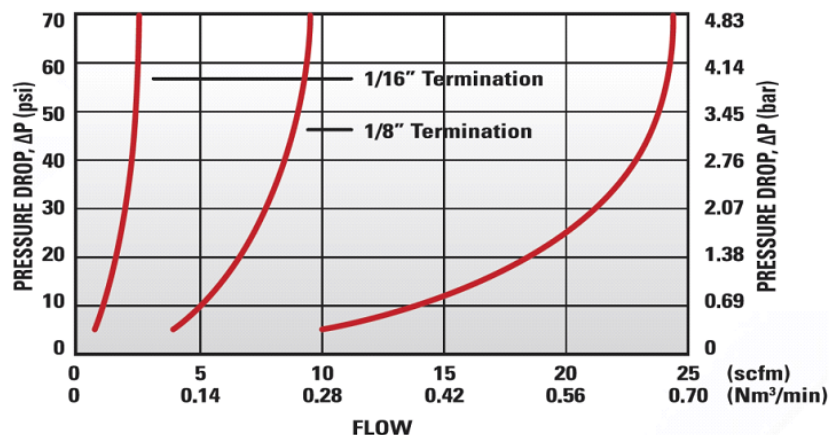


20PP Series Medical Grade Polypropylene Sterilization and Disinfectant Compatibility

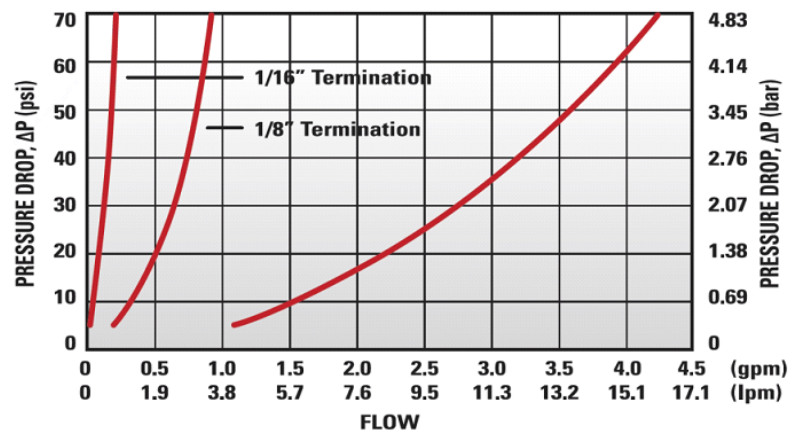
Formalin	Isopropyl Alcohol	Ethyl Alcohol	Ethylene Oxide (EtO)
Excellent	Excellent	Excellent	Excellent

Autoclave	E-Beam (50 kGy)	Gamma 5 Mrad (50kGy)	Dry Heat (250° F)
Do Not Use	Excellent	Excellent	Do Not Use

20PP Series Air Flow



20PP Series Water Flow



These graphs are intended to give you a general idea of the performance capabilities of the product line.

Specific coupling
combination flow rates can
be determined by using this
formula:

$$Q = C_v \times \text{SQRT}(\Delta P / S)$$

SQRT = Square root
 Q = Flow rate in gallons per minute
 C_v = Average flow rate (see chart)
 ΔP = Pressure drop across coupling (psi)
 S = Specific gravity of liquid

C_v Values for the 20PP-S8-04MALD Non-Valved Panel Mount Hose Barb Socket Coupling

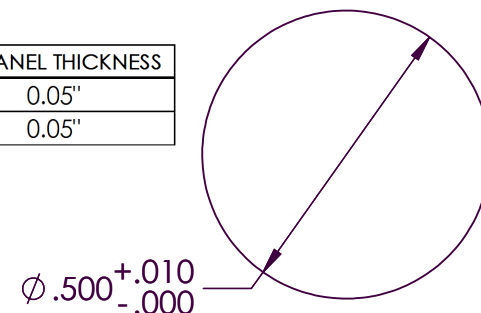
Plugs:	20PPV- PE2-01	20PP- PE2-01	20PPV- PE2-02	20PP- PE2-02	20PPV- PE2-04	20PP- PE2-04
20PP-S8-04MALD	0.03	0.03	0.16	0.25	0.18	0.40

Plugs:	20PPV- PE9-04	20PPX- PE9-04	20PPV- PE1-02	20PPX- PE1-02	20PPV- PE4-04	20PPX- PE4-04
20PP-S8-04MALD	0.18	0.40	0.16	0.40	0.21	0.40

Panel Mount Dimensions

	PANEL OPENING	MAX PANEL THICKNESS	MIN PANEL THICKNESS
SOCKETS	Per Drawing	0.5"	0.05"
PLUGS	0.5"	0.3"	0.05"

PANEL NUT HEX SIZE	PANEL NUT THREAD
5/8"	1/2" - 24UNS



20PP-S8-04

SHEET 3 OF 3