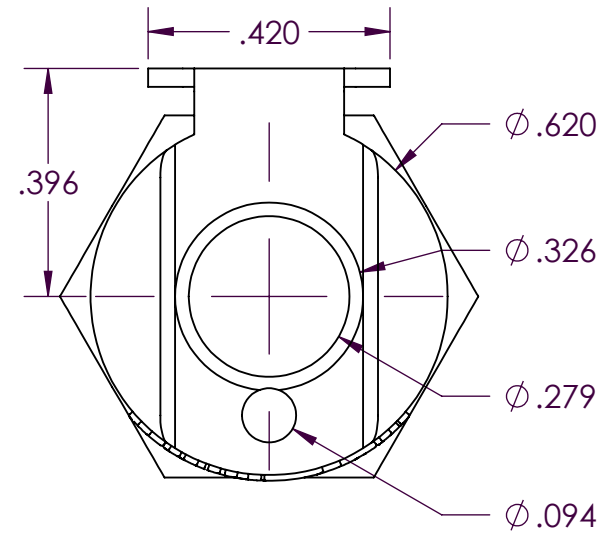
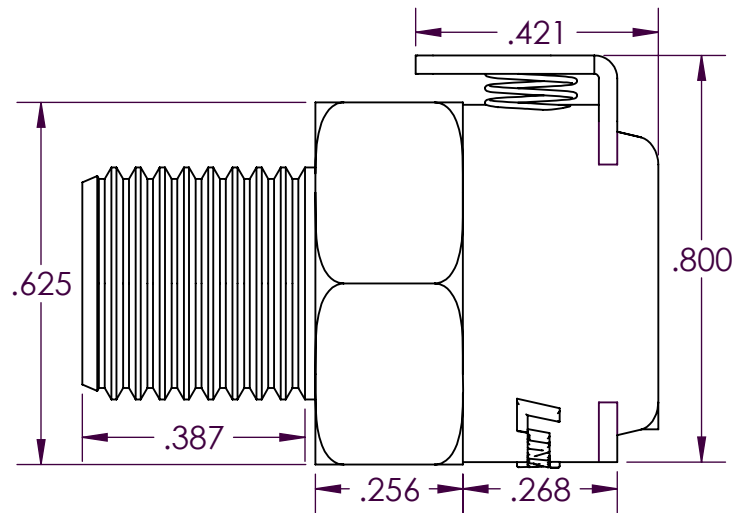


SCALE 2 : 1



PROPRIETARY AND CONFIDENTIAL

Description

THE INFORMATION CONTAINED IN THIS DRAWING IS THE SOLE PROPERTY OF INDUSTRIAL SPECIALTIES MFG. AND IS MED SPECIALITES. ANY REPRODUCTION IN PART OR AS A WHOLE WITHOUT THE WRITTEN PERMISSION OF INDUSTRIAL SPECIALTIES MFG. AND IS MED SPECIALITES IS PROHIBITED.

1/8" Male NPT Non-Valved Thumb-Latch Type Socket Coupling, 1/8" Flow, Chrome Plated Brass Body and Terminations, Stainless Steel Thumb-Latch, External Springs and Pins

NAME DATE
DRAWN BY: SCW 19-Jan-15

PART#

20CB-S1-02

REV
1

SHEET 1 OF 3

SCALE 3:1

DO NOT SCALE DRAWING

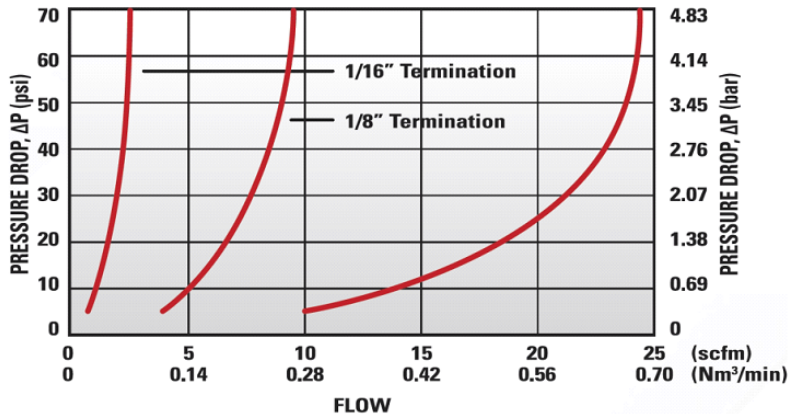


Industrial Specialties Mfg.
IS Med Specialties

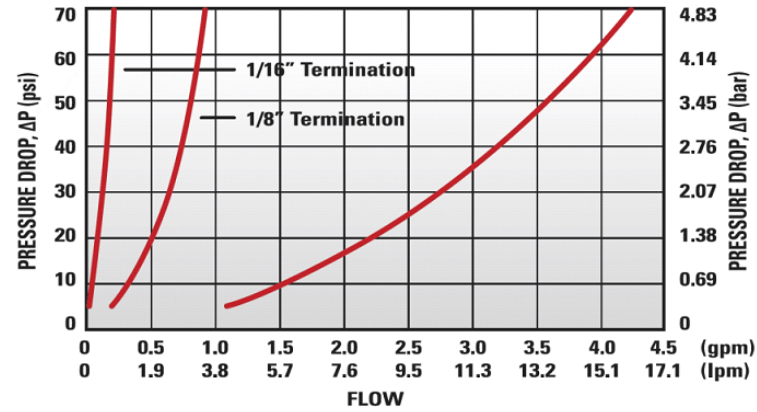
Specifications

Body and Termination Material	Food Grade Chrome / Brass
Thumb-latch Material	301 Stainless Steel
Thumb-latch Spring Material	304 Stainless Steel
Pin Material	316 Stainless Steel
Pin Spring Material	302 Stainless Steel
Operating Pressure Range	Vacuum to 250 psi (17.3 bar)
Operating Temperature Range	-40° F to 180° F (-40° C to 82° C)
Flow Capacity	1/8" Size
Thread Size	1/8" NPT
Compatibility Statement	<p>It is the sole responsibility of the system designer and user to select products suitable for their specific application requirements and to ensure proper installation, operation, and maintenance of these products.</p> <p>Material compatibility, product ratings and application details should be considered in the selection. Improper selection or use of products described herein can cause personal injury or product damage.</p>

20PP Series Air Flow



20PP Series Water Flow



Specific coupling combination flow rates can be determined by using this formula:

$$Q = C_v \times \text{SQRT}(\Delta P / S)$$

SQRT = Square root
 Q = Flow rate in gallons per minute
 C_v = Average flow rate (see chart)
 ΔP = Pressure drop across coupling (psi)
 S = Specific gravity of liquid

C_v Values for the 20CB-S1-02 Non-Valved Male Thread Socket Coupling

Plugs:	20CBV- PB2-02	20CB- PB2-02	20CBV- PB2-03	20CB- PB2-03	20CBV- PB2-04	20CB- PB2-04	20CBV- PB9-04
20CB1-S1-02	0.16	0.25	0.17	0.30	0.19	0.50	0.18

Plugs:	20CB- PB9-04	20CBV- PB1-02	20CB- PB1-02	20CBV- PB1-04	20CB- PB1-04	20CBV- PB4-04	20CB- PB4-04
20CB1-S1-02	0.40	0.20	0.50	0.20	0.50	0.24	0.50