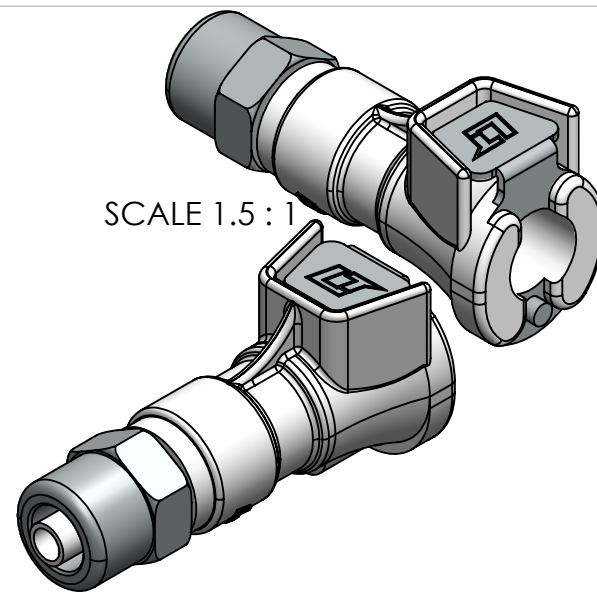


SCALE 1.5 : 1



PROPRIETARY AND CONFIDENTIAL

THE INFORMATION CONTAINED IN THIS DRAWING IS THE SOLE PROPERTY OF INDUSTRIAL SPECIALTIES MFG. AND IS MED SPECIALITES. ANY REPRODUCTION IN PART OR AS A WHOLE WITHOUT THE WRITTEN PERMISSION OF INDUSTRIAL SPECIALTIES MFG. AND IS MED SPECIALITES IS PROHIBITED.

Description

1/4" OD Tube Size,
Non-Valved In-Line Thumb-Latch Type
PTF Socket Coupling, 1/8" Flow,
Natural Acetal Body and Terminations,
Stainless Steel Thumb-Latch, External Springs
and Pins, Nickel Plated Brass PTF Nut

DRAWN BY:

NAME

SCW

DATE

23-Oct-14

PART#

20AC-S9-04

REV

1

SHEET 1 OF 3

SCALE 2.5:1

DO NOT SCALE DRAWING

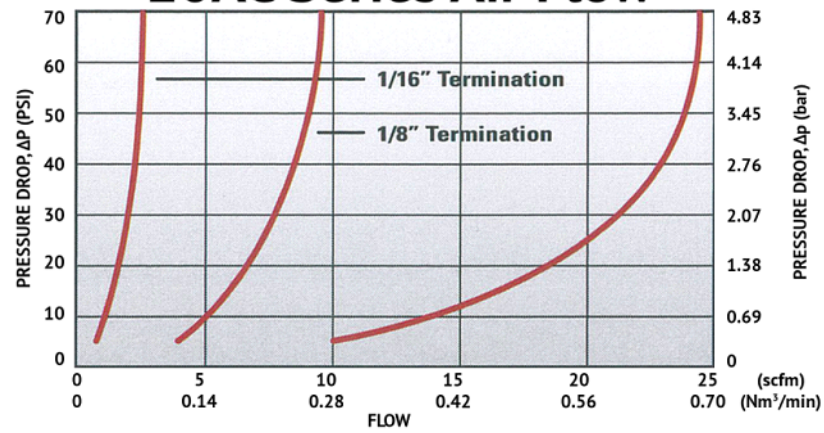


Industrial Specialties Mfg.
IS Med Specialties

Specifications

Body and Termination Material	Natural Acetal (POM) - FDA and NSF Compliant for Food Contact
Thumb-latch Material	301 Stainless Steel
Thumb-latch Spring Material	304 Stainless Steel
Pin Material	316 Stainless Steel
Pin Spring Material	302 Stainless Steel
PTF (Ferrules Polytube Fitting) Nut	Electrodeposited Nickel Plated Brass
Tube Size	1/4" OD, .17" ID
Metric Tube Size	6.4mm OD, 4.3mm ID
Operating Pressure Range	Vacuum to 120 psi (8.3 bar)
Operating Temperature Range	-40° F to 180° F (-40° C to 82° C)
Flow Capacity	1/8" Size
Compatibility Statement	<p>It is the sole responsibility of the system designer and user to select products suitable for their specific application requirements and to ensure proper installation, operation, and maintenance of these products.</p> <p>Material compatibility, product ratings and application details should be considered in the selection. Improper selection or use of products described herein can cause personal injury or product damage.</p>

20AC Series Air Flow



20AC Series Water Flow

