

PROPRIETARY AND CONFIDENTIAL

Description

THE INFORMATION CONTAINED IN THIS DRAWING IS THE SOLE PROPERTY OF INDUSTRIAL SPECIALTIES MFG. AND IS MED SPECIALITES. ANY REPRODUCTION IN PART OR AS A WHOLE WITHOUT THE WRITTEN PERMISSION OF INDUSTRIAL SPECIALTIES MFG. AND IS MED SPECIALITES IS PROHIBITED.

1/4" OD Tube Size, Non-Valved, Panel Mount In-Line Thumb-Latch Type PTF Socket Coupling, 1/8" Flow, Natural Acetal Body and Terminations, Stainless Steel Thumb-Latch, External Springs and Pins, Nickel Plated Brass PTF Nut, 1/2"-24UNS Nickel Plated Brass Panel Nut

NAME DATE
DRAWN BY: SCW 29-Oct-12

PART# REV
20AC-S8-04 1

SHEET 1 OF 3

SCALE 2.5:1

DO NOT SCALE DRAWING



Industrial Specialties Mfg.
IS Med Specialties

Specifications

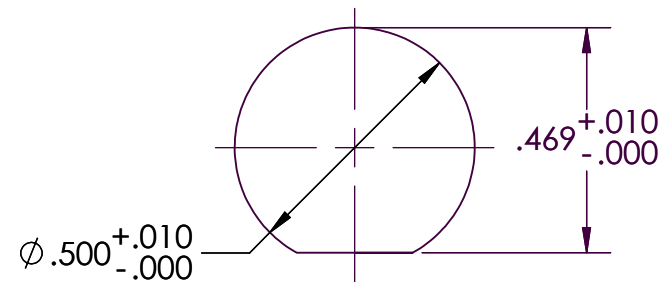
Body and Termination Material	Natural Acetal (POM) - FDA and NSF Compliant for Food Contact
Thumb-latch Material	301 Stainless Steel
Thumb-latch Spring Material	304 Stainless Steel
Pin Material	316 Stainless Steel
Pin Spring Material	302 Stainless Steel
PTF (Ferrules Polytube Fitting) Nut	Electrodeposited Nickel Plated Brass
Panel Mount Nut	1/2"-24UNS Electrodeposited Nickel Plated Brass
Operating Pressure Range	Vacuum to 120 psi (8.3 bar)
Operating Temperature Range	-40° F to 180° F (-40° C to 82° C)
Flow Capacity	1/8" Size
Compatibility Statement	<p>It is the sole responsibility of the system designer and user to select products suitable for their specific application requirements and to ensure proper installation, operation, and maintenance of these products.</p> <p>Material compatibility, product ratings and application details should be considered in the selection. Improper selection or use of products described herein can cause personal injury or product damage.</p>

Panel Mount Dimensions

	PANEL OPENING	MAX PANEL THICKNESS	MIN PANEL THICKNESS
SOCKETS	Per Drawing	0.5"	0.05"
PLUGS	0.5"	0.3"	0.05"

PANEL NUT HEX SIZE	PANEL NUT THREAD
5/8"	1/2" - 24UNS

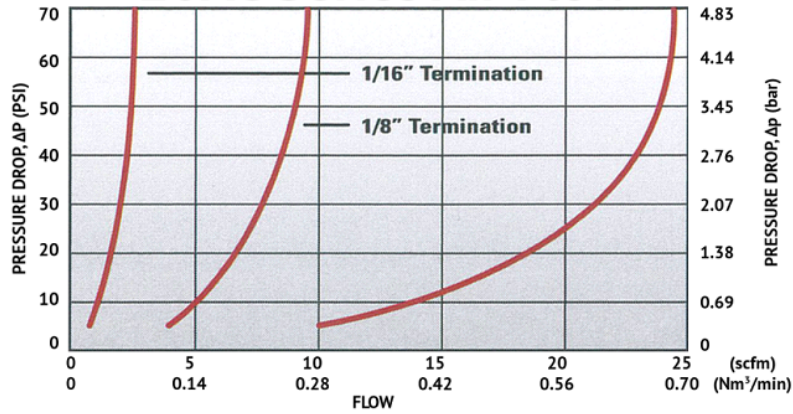
Greenlee® punch #60077



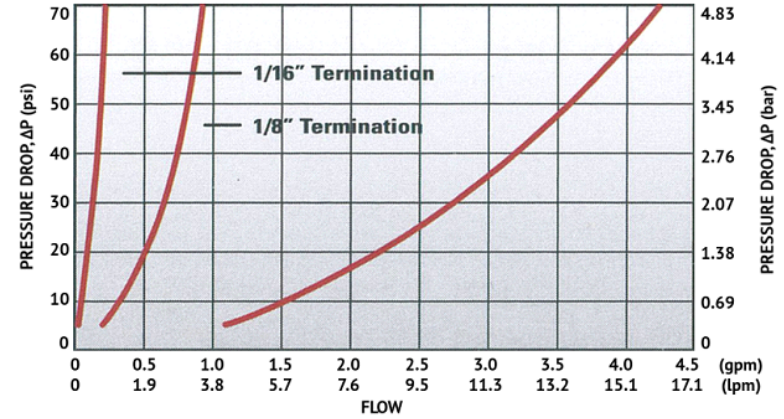
20AC-S8-04

SHEET 2 OF 3

20AC Series Air Flow



20AC Series Water Flow



Specific coupling combination flow rates can be determined by using this formula:

$$Q = C_v \times \text{SQRT}(\Delta P / S)$$

SQRT = Square root
 Q = Flow rate in gallons per minute
 C_v = Average flow rate (see chart)
 ΔP = Pressure drop across coupling (psi)
 S = Specific gravity of liquid

C_v Values for the 20AC-S8-04 Non-Valved Panel Mount In-Line PTF Socket Coupling

Plugs:	20ACV-PB2-01	20AC-PB2-01	20ACV-PB2-02	20AC-PB2-02	20ACV-PB2-03	20AC-PB2-03	20ACV-PB2-04	20AC-PB2-04
20AC-S8-04	0.03	0.03	0.16	0.25	0.17	0.30	0.18	0.40

Plugs:	20ACV-PB9-04	20AC-PB9-04	20ACV-PB1-02	20AC-PB1-02	20ACV-PB1-04	20AC-PB1-04	20ACV-PB4-04	20AC-PB4-04
20AC-S8-04	0.18	0.40	0.16	0.40	0.18	0.36	0.21	0.40

20AC-S8-04

SHEET 3 OF 3