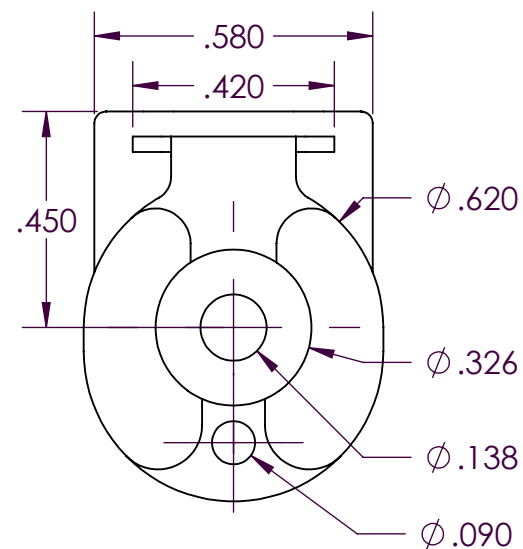
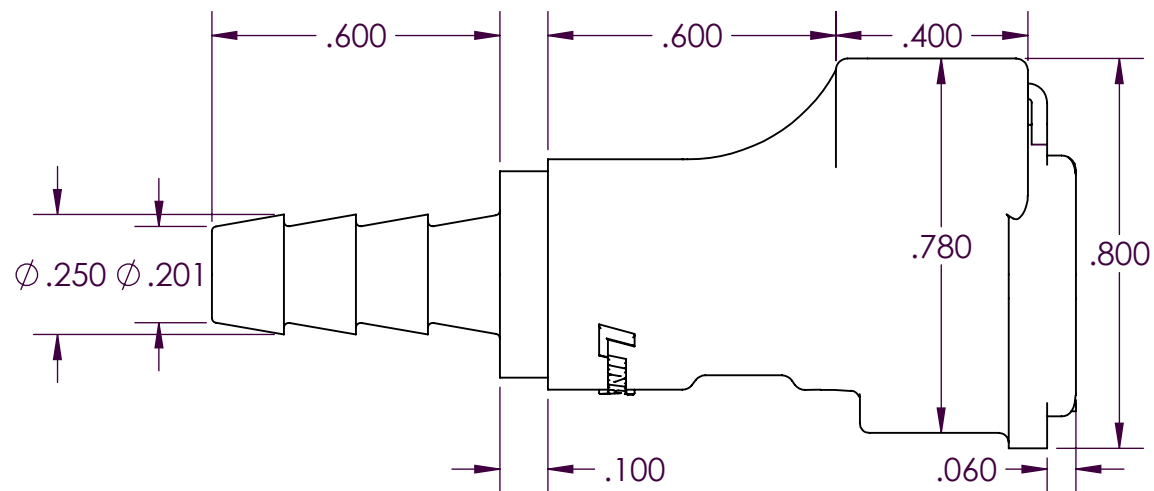
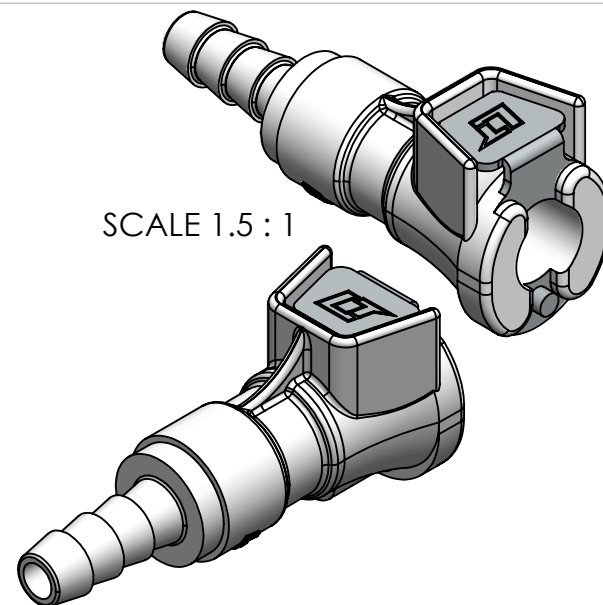


SCALE 1.5 : 1



PROPRIETARY AND CONFIDENTIAL

## Description

THE INFORMATION CONTAINED IN THIS DRAWING IS THE SOLE PROPERTY OF INDUSTRIAL SPECIALTIES MFG. AND IS MED SPECIALITES. ANY REPRODUCTION IN PART OR AS A WHOLE WITHOUT THE WRITTEN PERMISSION OF INDUSTRIAL SPECIALTIES MFG. AND IS MED SPECIALITES IS PROHIBITED.

3/16" Hose Barb, Non-Valved In-Line Hose Barb Socket Thumb-Latch Type Coupling, 1/8" Flow, Natural Acetal Body and Terminations, Stainless Steel Thumb-Latch, External Springs and Pins

DRAWN BY:

NAME

SCW

DATE

21-Oct-14

PART#

20AC-S2-03

REV

1

SHEET 1 OF 3

SCALE 2.5:1

DO NOT SCALE DRAWING

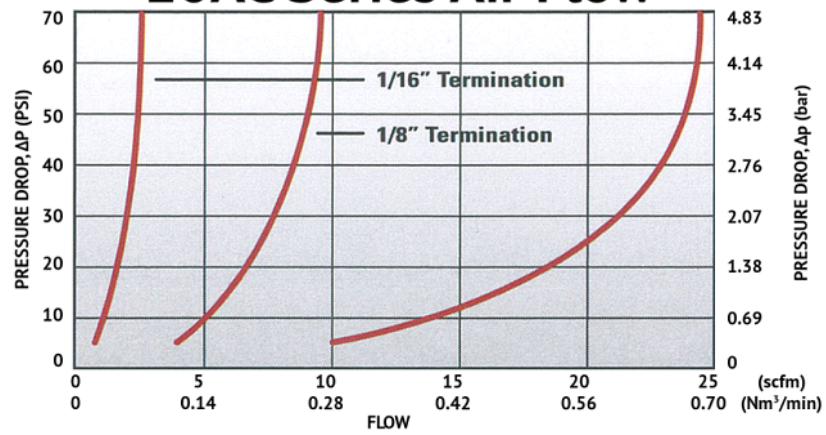


**Industrial Specialties Mfg.**  
**IS Med Specialties**

# Specifications

Body and Termination Material	Natural Acetal (POM) - FDA and NSF Compliant for Food Contact
Thumb-latch Material	301 Stainless Steel
Thumb-latch Spring Material	304 Stainless Steel
Pin Material	316 Stainless Steel
Pin Spring Material	302 Stainless Steel
Operating Pressure Range	Vacuum to 120 psi (8.3 bar)
Operating Temperature Range	-40° F to 180° F (-40° C to 82° C)
Flow Capacity	1/8" Size
Compatibility Statement	<p>It is the sole responsibility of the system designer and user to select products suitable for their specific application requirements and to ensure proper installation, operation, and maintenance of these products.</p> <p>Material compatibility, product ratings and application details should be considered in the selection. Improper selection or use of products described herein can cause personal injury or product damage.</p>

## 20AC Series Air Flow



## 20AC Series Water Flow

