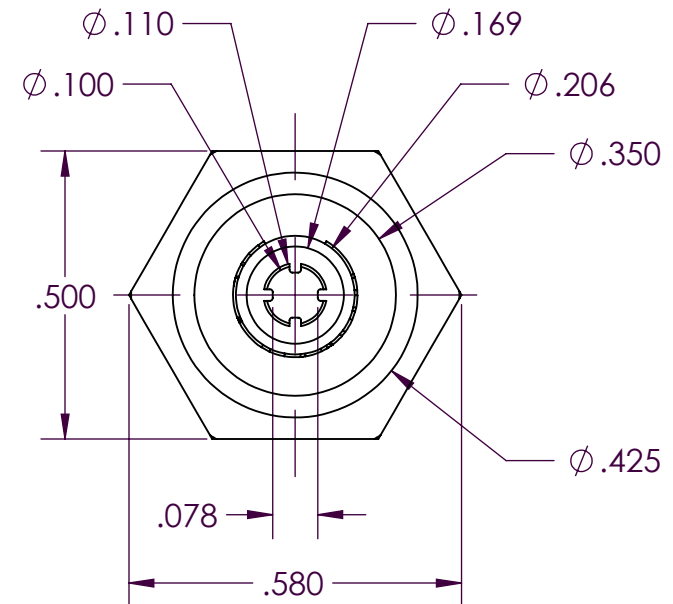
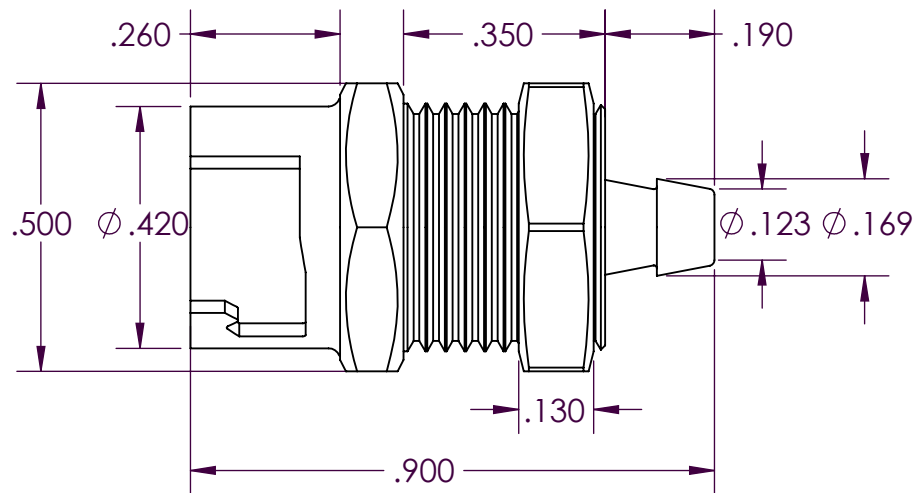


SCALE 2 : 1



PROPRIETARY AND CONFIDENTIAL

Description

THE INFORMATION CONTAINED IN THIS DRAWING IS THE SOLE PROPERTY OF INDUSTRIAL SPECIALTIES MFG. AND IS MED SPECIALITES. ANY REPRODUCTION IN PART OR AS A WHOLE WITHOUT THE WRITTEN PERMISSION OF INDUSTRIAL SPECIALTIES MFG. AND IS MED SPECIALITES IS PROHIBITED.

1/8" Barb, Non-Valved Twist Lock Type
Panel Mount Hose Barb Socket,
1/16" Flow,
Natural Acetal Body, Termination and Sleeve,
Nickel Plated Brass Panel Nut

DRAWN BY:

NAME

SCW

DATE

07-Oct-14

PART#

10AC-S3-02

REV

1

SHEET 1 OF 3

SCALE 3:1

DO NOT SCALE DRAWING



Industrial Specialties Mfg.
IS Med Specialties

Specifications

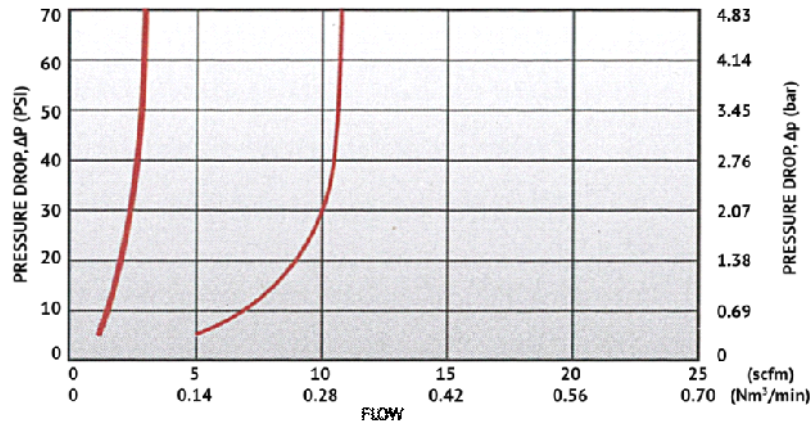
Body and Termination Material	Natural Acetal (POM) - FDA and NSF Compliant for Food Contact
Lock Sleeve Material	Natural Acetal (POM) - FDA and NSF Compliant for Food Contact
Panel Mount Nut Material	Electrodeposited Nickel Plated Brass
Operating Pressure Range	Vacuum to 100 psi (6.9 bar)
Operating Temperature Range	-40° F to 180° F (-40° C to 82° C)
Flow Capacity	1/16" Size
Tube Size	1/8" ID, 3.2mm ID
Compatibility Statement	<p>It is the sole responsibility of the system designer and user to select products suitable for their specific application requirements and to ensure proper installation, operation, and maintenance of these products.</p> <p>Material compatibility, product ratings and application details should be considered in the selection. Improper selection or use of products described herein can cause personal injury or product damage.</p>

Panel Mount Dimensions

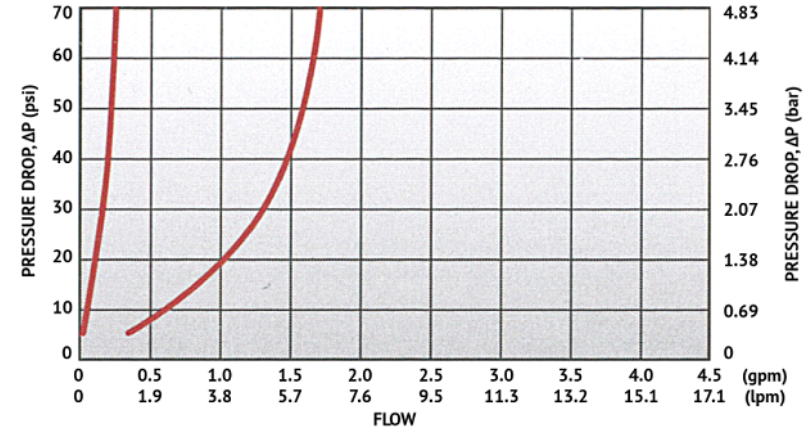
	PANEL OPENING	MAX PANEL THICKNESS	MIN PANEL THICKNESS
SOCKETS	0.438"	0.21"	0.03"
PLUGS	0.438"	0.21"	0.03"

PANEL NUT HEX SIZE	PANEL NUT THREAD
1/2"	7/16" - 24UNF

10AC and 10PP Series Air Flow



10AC and 10PP Series Water Flow



Specific coupling combination flow rates can be determined by using this formula:

$$Q = C_v \times \text{SQRT}(\Delta P / S)$$

SQRT = Square root

Q = Flow rate in gallons per minute

C_v = Average flow rate (see chart)

ΔP = Pressure drop across coupling (psi)

S = Specific gravity of liquid

C_v Values for the 10AC-S3-02 Socket Coupling

PLUGS: 10AC-PB2-01 10AC-PB2-02 10AC-PB3-01 10AC-PB3-02				
10AC-S3-02	0.03	0.19	0.03	0.19