

PROPRIETARY AND CONFIDENTIAL

THE INFORMATION CONTAINED IN THIS DRAWING IS THE SOLE PROPERTY OF INDUSTRIAL SPECIALTIES MFG. AND IS MED SPECIALITES. ANY REPRODUCTION IN PART OR AS A WHOLE WITHOUT THE WRITTEN PERMISSION OF INDUSTRIAL SPECIALTIES MFG. AND IS MED SPECIALITES IS PROHIBITED.

Description

1/4" OD Tube Size, Valved,
Panel Mount In-Line Thumb-Latch Type
PTF Socket Coupling, 1/8" Flow,
Natural Acetal Body and Terminations,
Stainless Steel Thumb-Latch, Springs and Pins,
Nickel Plated Brass PTF Nut,
1/2"-UNS Nickel Plated Brass Panel Nut

DRAWN BY:

NAME
SCW

DATE
29-Oct-14

SHEET 1 OF 3

SCALE 2.5:1

DO NOT SCALE DRAWING

PART#

20ACV-SB8-04

REV
1



Industrial Specialties Mfg.
IS Med Specialties

Specifications

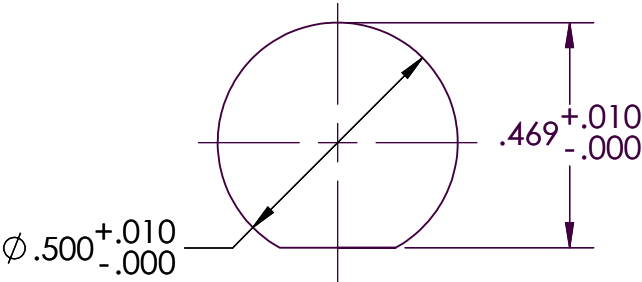
| | |
|-------------------------------------|--|
| Body and Termination Material | Natural Acetal (POM) - FDA and NSF Compliant for Food Contact |
| Seal Material Option | Buna-N O-ring - FDA and NSF Compliant for Food Contact O-rings lubricated with Dow Corning 200 food grade silicone oil. |
| Internal Valve Material | Natural Acetal (POM) - FDA and NSF Compliant for Food Contact |
| Internal Valve Spring Material | 316 Stainless Steel |
| Thumb-latch Material | 301 Stainless Steel |
| Thumb-latch Spring Material | 304 Stainless Steel |
| Pin Material | 316 Stainless Steel |
| Pin Spring Material | 302 Stainless Steel |
| PTF (Ferrules Polytube Fitting) Nut | Electrodeposited Nickel Plated Brass |
| Panel Mount Nut | 1/2"-24UNS Electrodeposited Nickel Plated Brass |
| Operating Pressure Range | Vacuum to 120 psi (8.3 bar) |
| Operating Temperature Range | -40° F to 180° F (-40° C to 82° C) |
| Flow Capacity | 1/8" Size |
| Compatibility Statement | It is the sole responsibility of the system designer and user to select products suitable for their specific application requirements and to ensure proper installation, operation, and maintenance of these products. Material compatibility, product ratings and application details should be considered in the selection. Improper selection or use of products described herein can cause personal injury or product damage. |

Panel Mount Dimensions

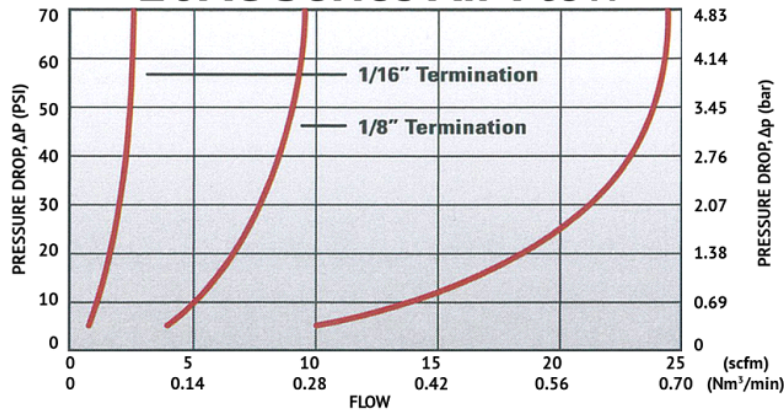
| | PANEL OPENING | MAX PANEL THICKNESS | MIN PANEL THICKNESS |
|---------|---------------|---------------------|---------------------|
| SOCKETS | Per Drawing | 0.5" | 0.05" |
| PLUGS | 0.5" | 0.3" | 0.05" |

| PANEL NUT HEX SIZE | PANEL NUT THREAD |
|--------------------|------------------|
| 5/8" | 1/2" - 24UNS |

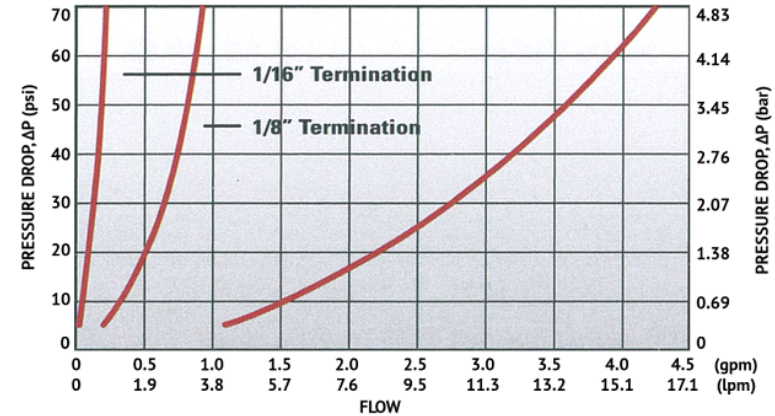
Greenlee® punch #60077



20AC Series Air Flow



20AC Series Water Flow



Specific coupling
combination flow rates can
be determined by using this
formula:

$$Q = C_v \times \text{SQRT}(\Delta P / S)$$

SQRT = Square root

Q = Flow rate in gallons per minute

C_v = Average flow rate (see chart)

ΔP = Pressure drop across coupling (psi)

S = Specific gravity of liquid

C_v Values for the 20ACV-SB8-04 Valved Panel Mount In-Line PTF Socket Coupling

| Plugs: | 20ACV- PB2-01 | 20AC- PB2-01 | 20ACV- PB2-02 | 20AC- PB2-02 | 20ACV- PB2-03 | 20AC- PB2-03 | 20ACV- PB2-04 | 20AC- PB2-04 |
|--------------|------------------|-----------------|------------------|-----------------|------------------|-----------------|------------------|-----------------|
| 20ACV-SB8-04 | 0.03 | 0.03 | 0.16 | 0.20 | 0.16 | 0.21 | 0.17 | 0.22 |

| Plugs: | 20ACV- PB9-04 | 20AC- PB9-04 | 20ACV- PB1-02 | 20AC- PB1-02 | 20ACV- PB1-04 | 20AC- PB1-04 | 20ACV- PB4-04 | 20AC- PB4-04 |
|--------------|------------------|-----------------|------------------|-----------------|------------------|-----------------|------------------|-----------------|
| 20ACV-SB8-04 | 0.17 | 0.21 | 0.17 | 0.21 | 0.17 | 0.21 | 0.18 | 0.22 |

20ACV-SB8-04

SHEET 3 OF 3