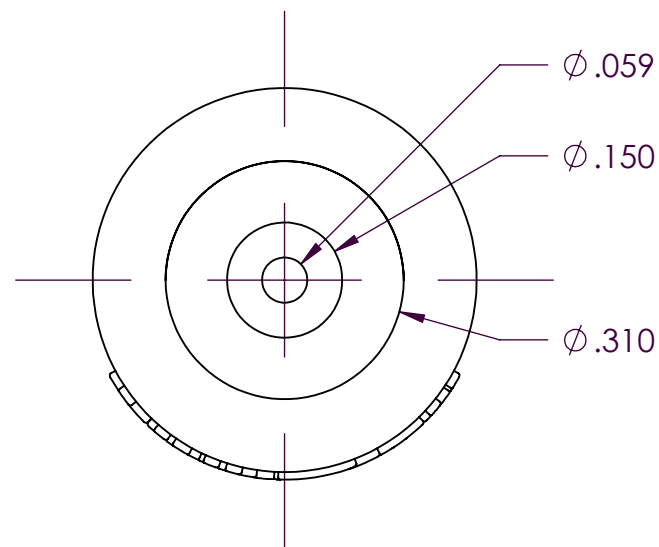
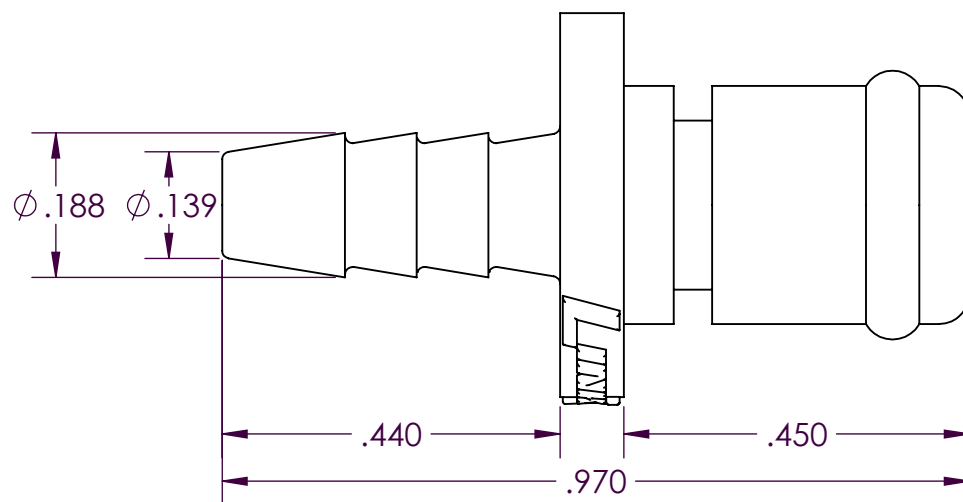


SCALE 2 : 1



PROPRIETARY AND CONFIDENTIAL

Description

THE INFORMATION CONTAINED IN THIS DRAWING IS THE SOLE PROPERTY OF INDUSTRIAL SPECIALTIES MFG. AND IS MED SPECIALITES. ANY REPRODUCTION IN PART OR AS A WHOLE WITHOUT THE WRITTEN PERMISSION OF INDUSTRIAL SPECIALTIES MFG. AND IS MED SPECIALITES IS PROHIBITED.

1/8" Hose Barb,
Non-Valved In-Line Hose Barb Plug Coupling,
1/8" Flow,
Natural Acetal Body and Terminations,
Buna-N O-ring Seal

DRAWN BY:

NAME

SCW

DATE

07-Nov-14

PART#

20AC-PB2-02

REV

1

SHEET 1 OF 3

SCALE 4:1

DO NOT SCALE DRAWING

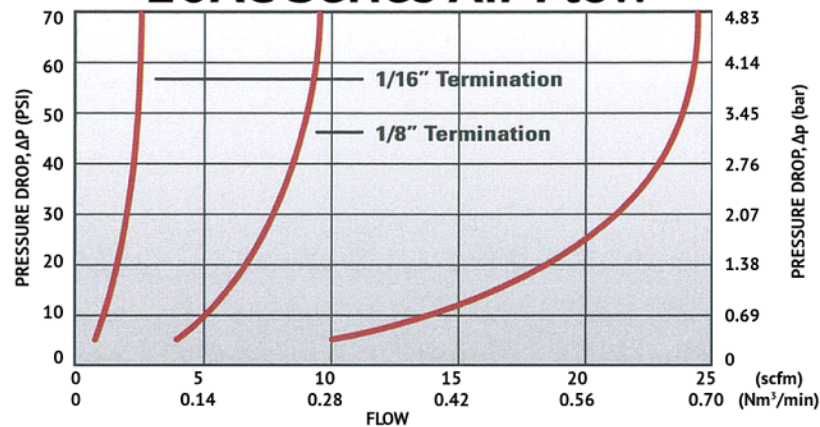


Industrial Specialties Mfg.
IS Med Specialties

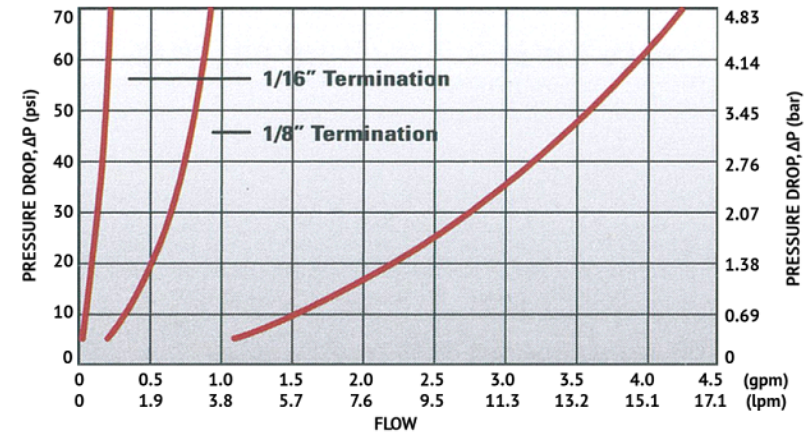
Specifications

Body and Termination Material	Natural Acetal (POM) - FDA and NSF Compliant for Food Contact
Seal Material Option	Buna-N O-ring - FDA and NSF Compliant for Food Contact O-rings lubricated with Dow Corning 200 food grade silicone oil.
Operating Pressure Range	Vacuum to 120 psi (8.3 bar)
Operating Temperature Range	-40° F to 180° F (-40° C to 82° C)
Flow Capacity	1/8" Size
Barb Size	1/8" ID Tube Size
Compatibility Statement	It is the sole responsibility of the system designer and user to select products suitable for their specific application requirements and to ensure proper installation, operation, and maintenance of these products. Material compatibility, product ratings and application details should be considered in the selection. Improper selection or use of products described herein can cause personal injury or product damage.

20AC Series Air Flow



20AC Series Water Flow



Specific coupling
combination flow rates can
be determined by using this
formula:

$$Q = C_v \times \text{SQRT}(\Delta P / S)$$

SQRT = Square root

Q = Flow rate in gallons per minute

C_v = Average flow rate (see chart)

ΔP = Pressure drop across coupling (psi)

S = Specific gravity of liquid

C_v Values for the 20AC-PB2-02 In-Line Hose Barb Plug Coupling

Sockets:	20ACV-SB2-01	20AC-S2-01	20ACV-SB2-04	20AC-S2-04	20ACV-SB3-02	20AC-S3-02	20ACV-SB3-04
20AC-PB2-02	0.03	0.03	0.22	0.24	0.17	0.19	0.22

Sockets:	20AC-S3-04	20ACV-SB8-04	20AC-S8-04	20ACV-SB1-02	20AC-S1-02	20ACV-SB1-04	20AC-S1-04
20AC-PB2-02	0.25	0.20	0.25	0.24	0.25	0.25	0.26

20AC-PB2-02

SHEET 3 OF 3